

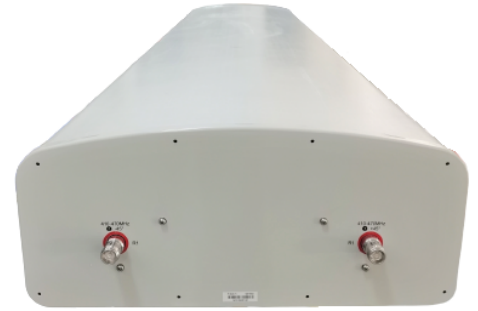


P1-X20-T1

2-Ports, X-Pol, Panel Antenna, 2.1m, 410-470 MHz, 65deg, FET T0

FEATURES / BENEFITS

- 2 ports, 1 cross pol system in low band (410-470MHz)
- Fixed Electrical Tilt
- 2x2 MIMO application



Technical features

ELECTRICAL SPECIFICATIONS

Electrical Specification Header		LOW BAND ARRAY (410-470MHz) [R1]
Frequency Band	MHz	410 - 470
Gain Typical	dBi	14.6
Gain Over all Tilts	dBi	14.3+/-0.3
Azimuth Beamwidth 3dB	Deg	66.7 +/- 0.8
Elevation Beamwidth 3dB	Deg	17.7 +/- 1.1
Cross Polar Discrimination at Boresight	dB	28.2
Cross Polar Discrimination over Sector	dB	15.5
F/B at +/-30deg Total Power	dB	22.6
First Upper Side Lobe Suppression	dB	16.3
Electrical Downtilt	Deg	T0
Cross Polar Isolation	dB	25
VSWR	-	1.5
Maximum Effective Power per Port	Watt	300

ELECTRICAL SPECIFICATIONS

Impedance	Ohm	50
Polarization	Deg	±45°

MECHANICAL SPECIFICATIONS

Dimensions - H x W x D	mm (in)	2130 x 499 x 215 (83.9 x 19.6 x 8.5)
Weight (Antenna Only)	kg (lb)	25 (55.1)
Weight (Mounting Hardware only)	kg (lb)	5.4 (11.9)
Packing size- HxWxD	mm (in)	2380 x 650 x 355 (93.7 x 25.6 x 14)
Shipping Weight	kg (lb)	38.5 (84.9)
Connector type		2 x 4.3-10 female/bottom
Radome Material / Color		Fiberglass / Light Grey RAL7035



P1-X20-T1

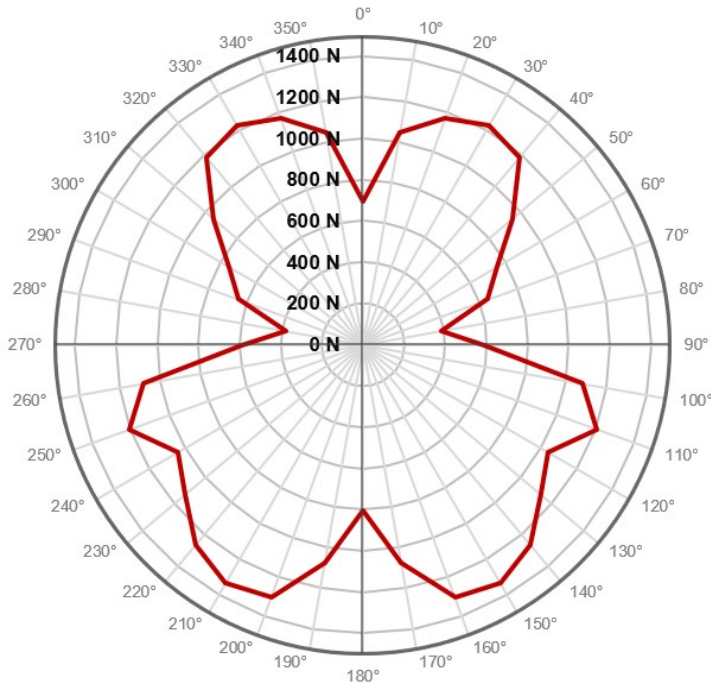
2-Ports, X-Pol, Panel Antenna, 2.1m, 410-470 MHz, 65deg, FET T0

TESTING AND ENVIRONMENTAL

Temperature Range	°C (°F)	-40 to 70 (-40 to 158)
Lightning protection		Direct Ground
Survival/Rated Wind Velocity	km/h	200 (150)

ORDERING INFORMATION

Order No.	Configuration	Mounting Hardware	Mounting pipe Diameter	Shipping Weight
P1-X20-T1	Fixed Electrical Tilt	APM50-M1	50-110mm	38.5 kg



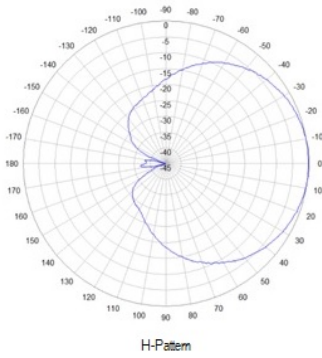
Rated Wind Speed, Km/h	150
Wind Load Frontal, Resultant, N	697
Wind Load Side, Resultant, N	586
Wind Load Rear, Resultant, N	807
Maximum Wind Load, Resultant, N	1333
Maximum Wind Load, Drag Force, N	1180



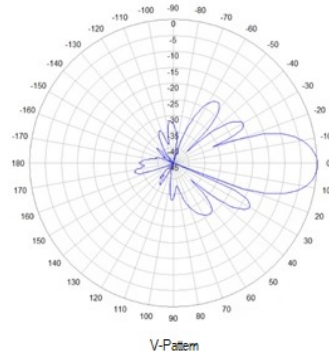


P1-X20-T1

2-Ports, X-Pol, Panel Antenna, 2.1m, 410-470 MHz, 65deg, FET T0



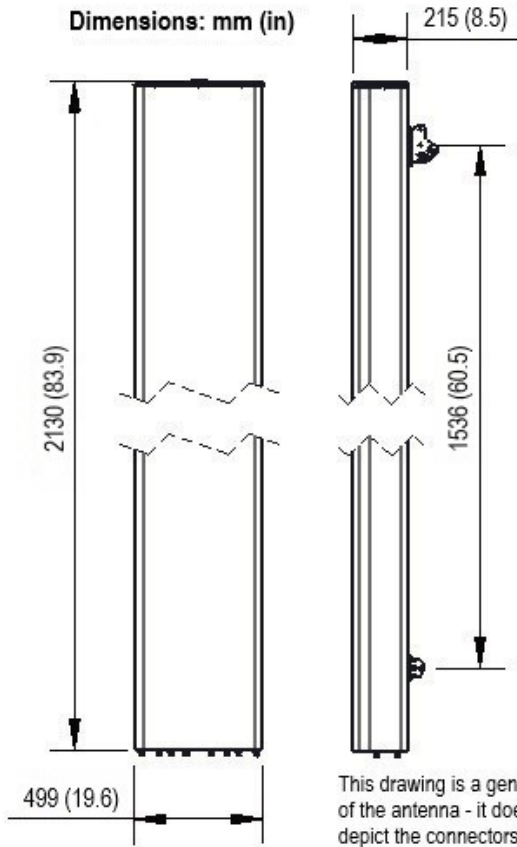
H-Plane



V-Plane



Dimensions: mm (in)



This drawing is a general representation of the antenna - it does NOT accurately depict the connectors or radome shape.



External Document Links

[APM50_Series_Installation_Instructions](#)

Notes

- All electrical parameters are compliant with BASTA NGMN 11.1 requirements.
- For additional mounting information please click "External Document Links".

• Radiating patterns: [Request pattern files](#)