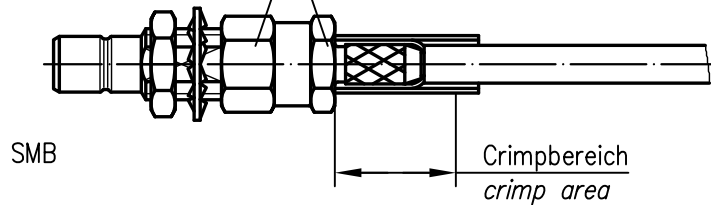
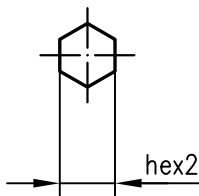


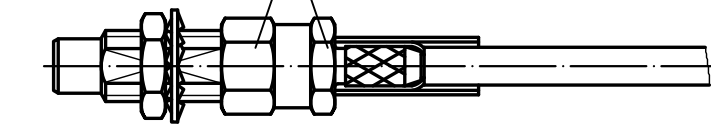
nach dem Einschrauben crimpen  
Anzugsmoment:  $0.8 \pm 0.1$  Nm

*crimp after screw in  
tightening torque:  $0.8 \pm 0.1$  Nm*

SW 5.5  
hex 5.5



SW 5.5  
hex 5.5



XX	Crimpeinsatz <i>crimp insert</i>	6kt.1 x Länge <i>hex1 x length</i>	6kt.2 x Länge <i>hex2 x length</i>
03	N01003A0009		3.25x8
13	N01003A0010		2.67x8
14	N01003A0014		3.65x8

d	23387	13.12.11	MA
c	11209	20.03.00	BJ
b	7000	14.08.96	BE
a	5624	19.05.95	BI
Index <i>index</i>	Änderung <i>modification</i>	Datum <i>date</i>	Name <i>name</i>

	Datum <i>date</i>	Name <i>name</i>
Gez. <i>drawn</i>	30.07.93	HM
Gepr. <i>app'd</i>	19.05.95	BI

**Series SMB/SMC crimp  
Serie SMB/SMC crimp**

Untert.-  
Art **R** TG-Nr.  
**T00100C1400**

Ersatz für/  
*replacement for*



Original **A4** Blatt **1/1**  
*sheet*

Maßstab **2:1**  
*scale*