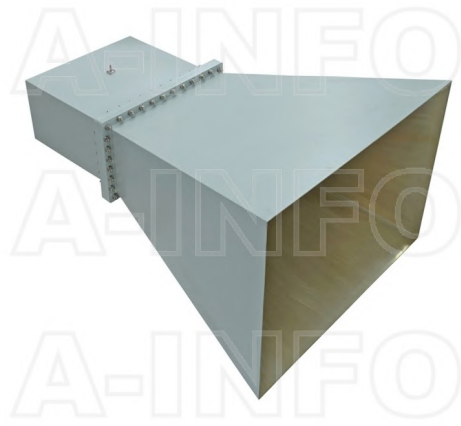


LB-2300-10-C-SF Standard Gain Horn Antenna 0.32-0.49GHz 10dB Gain SMA Female



Standard Gain Horn Antenna Operating From 0.32GHz to 0.49GHz With a Nominal 10dB Gain With SMA Female Connector

### Product Information

SKU	LB-2300-10-C-SF
-----	-----------------

### Description

Standard Gain Horn Antenna LB-2300-10-C-SF, operating from 0.32 to 0.49GHz with a nominal 10dB gain and low VSWR 1.25:1 with SMA Female connector output. The model LB-2300-10-C-SF has uniform gain through its frequency span, providing efficient performance characteristics and directionality. It can handle 50W continuously and 3000W peak power. Constructed of lightweight corrosion-resistant aluminum, the antenna will provide years of trouble-free indoor and outdoor service. This standard gain horn antenna is linearly polarized and ideally suited for EMI testing, direction finding, surveillance, antenna gain and pattern measurements and other applications.

### Technical Specification

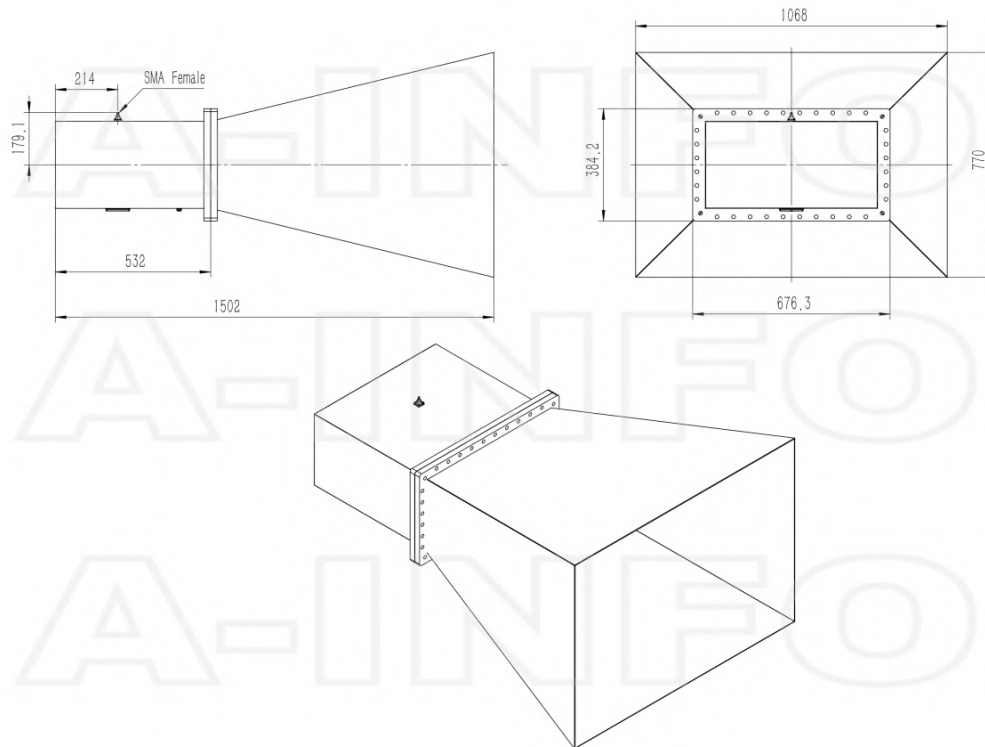
Electrical Specification		Interface	
Frequency, Min (GHz)	0.32	Output Type	Coaxial
Frequency, Max (GHz)	0.49	Connector	SMA
Waveguide Type	Rectangular	Connector Gender	Female
Waveguide Size EIA WR	WR2300	Mechanical Specification	
Gain, Typ (dBi)	10	Figure	C Type
Polarization	Linear	Body Material	Al
3dB Beamwidth, E-Plane, Typ (Deg.)	50	Finish	Chemical Conversion Coating, Gray Paint
3dB Beamwidth, H-Plane, Typ (Deg.)	46	Size, W (mm)	1068
Cross Pol. Isolation, Typ (dB)	30	Size, H (mm)	770
VSWR, Typ	1.25:1	Size, L (mm)	1502
Impedance, (Ohm)	50	Weight, (kg)	47
Power Handling, CW, (W)	50		
Power Handling, Peak, (W)	3000		

## Additional Information

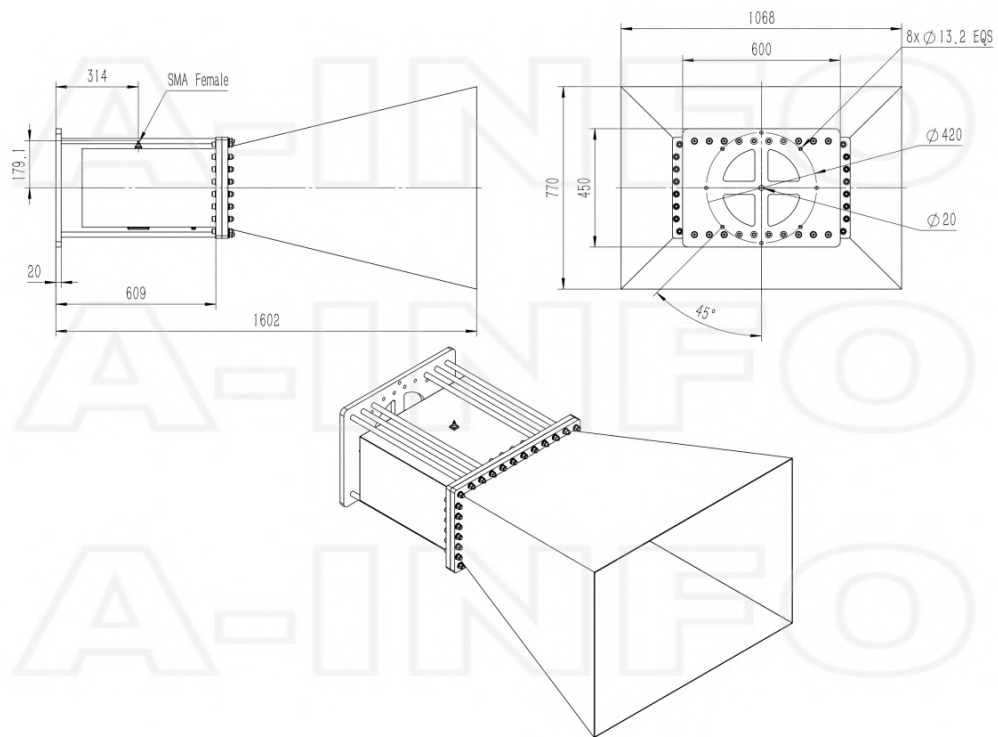
Application	General Purpose Indoor & Outdoor, Fixed	Solution for	Gain Reference Antenna Measurement Reflector Feed Far-field Measurement System Intergration Material Measurement
-------------	---	--------------	---

## Outline Drawing

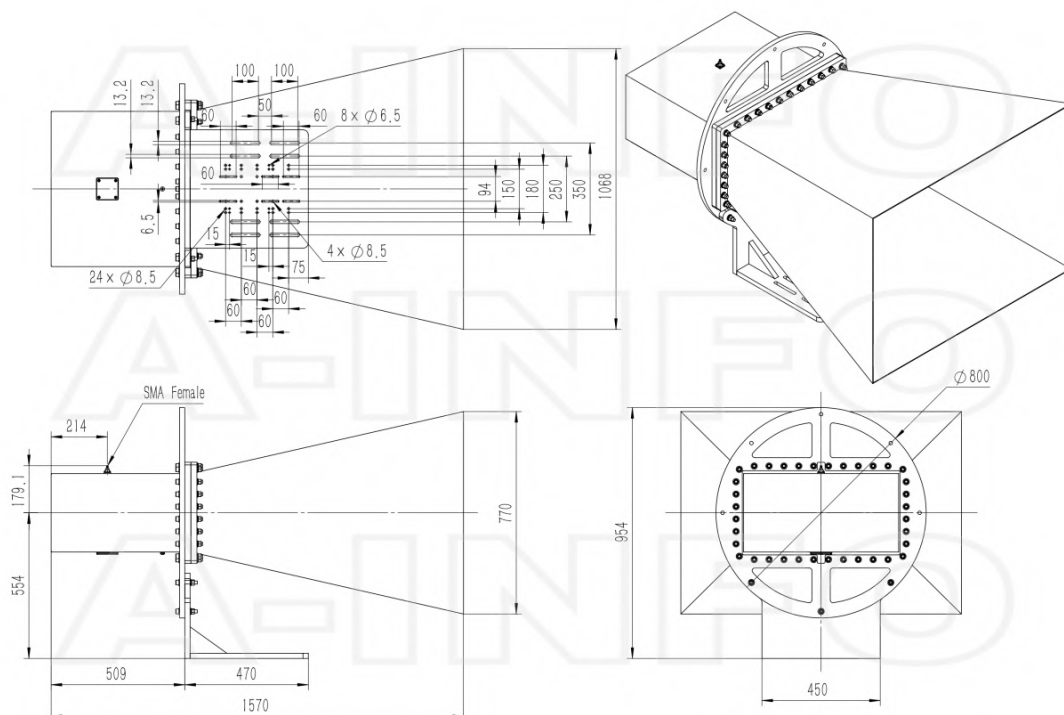
SMA Female Output (P/N: LB-2300-10-C-SF)



### SMA Female Output with Round Mounting Bracket (Option, P/N: LB-2300-10-C-MB)

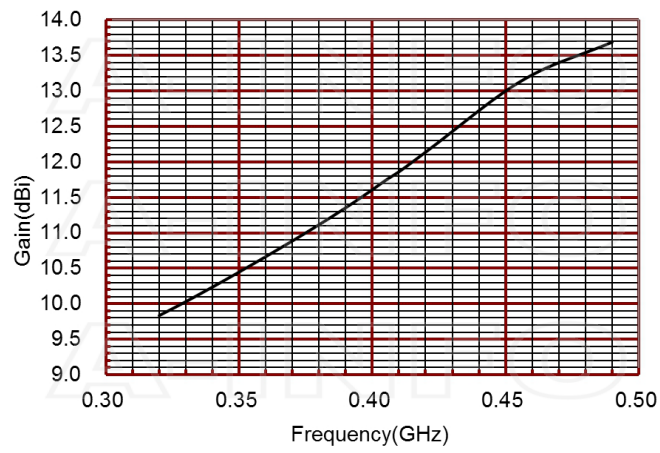


### SMA Female Output with L Type Mounting Bracket (Option, P/N: LB-2300-10-C-L)

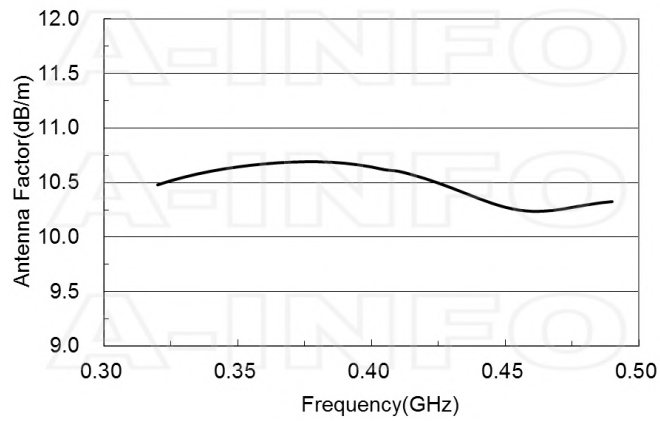


## Typical Test Results

### Gain



### Antenna Factor



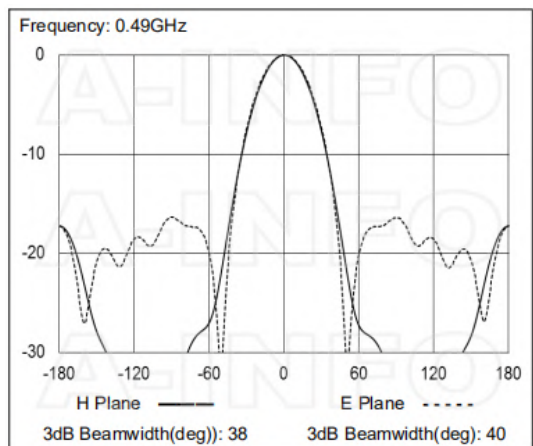
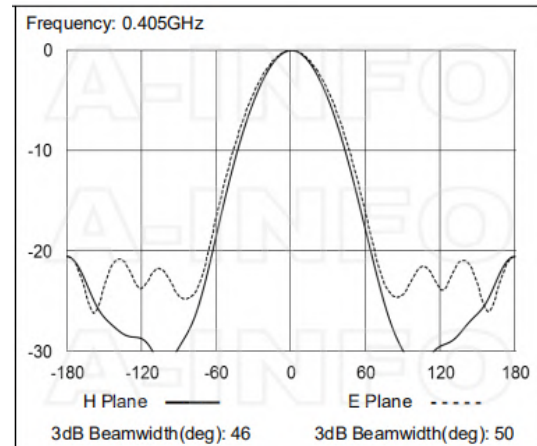
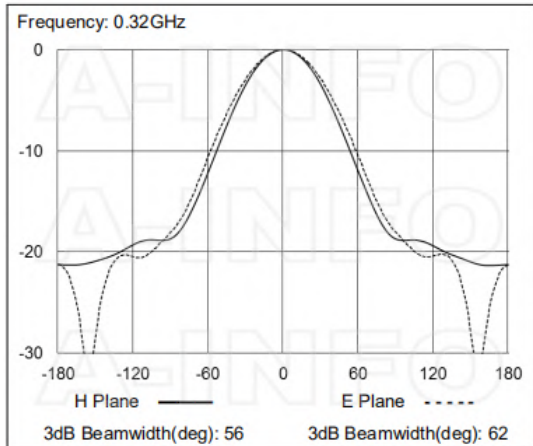
### Antenna Factor (Table)

Frequency (GHz)	Gain (dBi)	Antenna Factor (dB/m)	Frequency (GHz)	Gain (dBi)	Antenna Factor (dB/m)
0.320	9.83	10.48	0.410	11.86	10.60
0.325	9.93	10.52	0.415	12.00	10.57
0.330	10.03	10.55	0.420	12.14	10.54
0.335	10.13	10.58	0.425	12.28	10.50
0.340	10.24	10.60	0.430	12.43	10.45
0.345	10.34	10.63	0.435	12.58	10.40
0.350	10.45	10.64	0.440	12.72	10.36
0.355	10.56	10.66	0.445	12.87	10.31
0.360	10.66	10.67	0.450	13.00	10.27
0.365	10.77	10.68	0.455	13.12	10.25
0.370	10.89	10.69	0.460	13.23	10.24
0.375	11.00	10.69	0.465	13.32	10.24
0.380	11.11	10.69	0.470	13.40	10.25
0.385	11.23	10.69	0.475	13.47	10.27
0.390	11.35	10.68	0.480	13.54	10.29
0.395	11.48	10.66	0.485	13.61	10.31
0.400	11.61	10.64	0.490	13.69	10.33
0.405	11.74	10.62			

### VSWR



## Pattern



## Related Products



LB-2300-10-C-MB Round Type Mounting Bracket



LB-2300-10-C-L L type mounting bracket



Carrying Case\_LB-2300-10-C Al Alloy Carrying Case



SM-SM-A050-1000 Flexible Cable Assembly 1000mm DC- 26.5GHz SMA Male to SMA Male



SM-SM-A050-1500 Flexible Cable Assembly 1500mm DC- 26.5GHz SMA Male to SMA Male



SM-SM-A050-2000 Flexible Cable Assembly 2000mm DC- 26.5GHz SMA Male to SMA Male



SM-SM-A050-3000 Flexible Cable Assembly 3000mm DC- 26.5GHz SMA Male to SMA Male



SM-SM-A050-5000 Flexible Cable Assembly 5000mm DC- 26.5GHz SMA Male to SMA Male



SM-SM-A050-10000 Flexible Cable Assembly 10000mm DC- 26.5GHz SMA Male to SMA Male



SM-SM-A080-200 Flexible Cable Assembly 200mm DC- 26.5GHz SMA Male to SMA Male



SM-SM-A080-300 Flexible Cable Assembly 300mm DC- 26.5GHz SMA Male to SMA Male



SM-SM-A080-500 Flexible Cable Assembly 500mm DC- 26.5GHz SMA Male to SMA Male



SM-SM-A080-1000 Flexible Cable Assembly 1000mm DC- 26.5GHz SMA Male to SMA Male



SM-SM-A080-1500 Flexible Cable Assembly 1500mm DC- 26.5GHz SMA Male to SMA Male



SM-SM-A080-2000 Flexible Cable Assembly 2000mm DC- 26.5GHz SMA Male to SMA Male



SM-SM-A080-3000 Flexible Cable Assembly 3000mm DC- 26.5GHz SMA Male to SMA Male



SM-SM-A080-5000 Flexible Cable Assembly 5000mm DC- 26.5GHz SMA Male to SMA Male



SM-SM-A080-10000 Flexible Cable Assembly 10000mm DC- 26.5GHz SMA Male to SMA Male



SM-SM-A080-20000 Flexible Cable Assembly 20000mm DC- 26.5GHz SMA Male to SMA Male



SM-SM-A100-100 Flexible Cable Assembly 100mm DC- 18GHz SMA Male to SMA Male



SM-SM-A100-200 Flexible Cable Assembly 200mm DC- 18GHz SMA Male to SMA Male



SM-SM-A100-300 Flexible Cable Assembly 300mm DC- 18GHz SMA Male to SMA Male



SM-SM-A100-500 Flexible Cable Assembly 500mm DC- 18GHz SMA Male to SMA Male



SM-SM-A100-1000 Flexible Cable Assembly 1000mm DC- 18GHz SMA Male to SMA Male



SM-SM-A100-1500 Flexible Cable Assembly 1500mm DC- 18GHz SMA Male to SMA Male



SM-SM-A100-2000 Flexible Cable Assembly 2000mm DC- 18GHz SMA Male to SMA Male



SM-SM-A100-3000 Flexible Cable Assembly 3000mm DC- 18GHz SMA Male to SMA Male



SM-SM-A100-5000 Flexible Cable Assembly 5000mm DC- 18GHz SMA Male to SMA Male

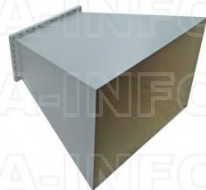


SM-SM-A100-10000 Flexible Cable Assembly 10000mm DC- 18GHz SMA Male to SMA Male

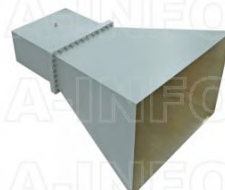
### Similar Products



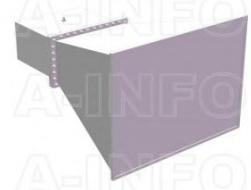
LB-2300-10-ASPO Standard Gain Horn Antenna 0.32-0.49GHz 10dB Gain Rectangular Waveguide Interface



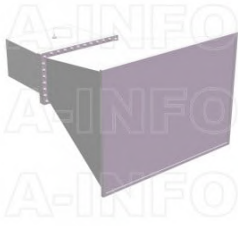
LB-2300-10-A Standard Gain Horn Antenna 0.32-0.49GHz 10dB Gain Rectangular Waveguide Interface



LB-2300-10-C-NF Standard Gain Horn Antenna 0.32-0.49GHz 10dB Gain N Type Female



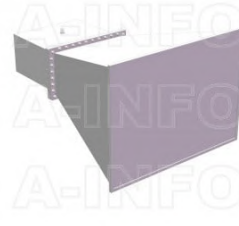
LB-2300-10-C-NFSPO Standard Gain Horn Antenna 0.32-0.49GHz 10dB Gain N Type Female



LB-2300-10-C-SFSPO Standard Gain Horn Antenna 0.32-0.49GHz 10dB Gain SMA Female



LB-2300-10-C-7/16F Standard Gain Horn Antenna 0.32-0.49GHz 10dB Gain 7/16(DIN) Female



LB-2300-10-C-7/16FSPO Standard Gain Horn Antenna 0.32-0.49GHz 10dB Gain 7/16(DIN) Female

## About this Datasheet

<ul style="list-style-type: none"> <li>● <b>Product Information</b></li> </ul> <p>Product Link:  <a href="https://www.ainfoinc.com/lb-2300-10-c-sf-standard-gain-horn-antenna-0-32-0-49-ghz-10db-gain-sma-female">https://www.ainfoinc.com/lb-2300-10-c-sf-standard-gain-horn-antenna-0-32-0-49-ghz-10db-gain-sma-female</a>            Data subject to change without notice.            © A-INFO INC. 2024. All Rights Reserved</p>	<ul style="list-style-type: none"> <li>● <b>Contact Us</b></li> </ul> <p>Address:            60 Tesla, Irvine, CA 92618, USA</p> <p>Website:  <a href="http://www.ainfoinc.com">www.ainfoinc.com</a></p> <p>Email:  <a href="mailto:sales@ainfoinc.com">sales@ainfoinc.com</a></p>	<ul style="list-style-type: none"> <li>● <b>Phone &amp; Fax</b></li> </ul> <p>Phone:            +1-949-639-9688            +1-949-639-9608</p> <p>Fax:            +1-949-639-9670</p>
---	--	---