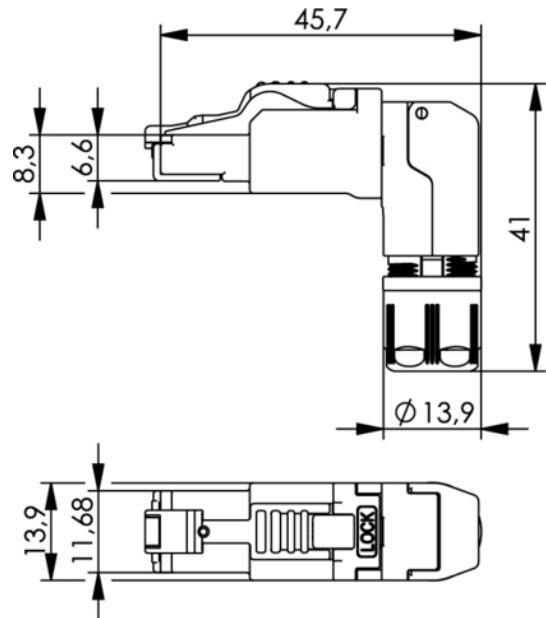
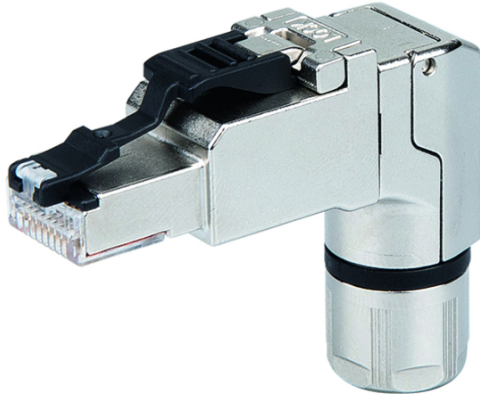


order number: J00026A4001

MFP8-4x90 T568B Cat.6_A, AWG24/1-22/1, AWG27/7-22/7



Technical Attributes	
Short name	MFP8-4x90 T568B Cat.6 _A
Remarks	AWG 24/1-22/1, AWG 27/7-22/7, incl. pre-assembled dust protection cap

Performance Characteristics

- Cable entry from 4 directions (4x90)
- Category 6A acc. to ISO/IEC 11801
- Plug: IEC 60603-7-51 compliant
- Life: ≥ 750 mating cycles
- Contact finish material: Ni1,2Au0,8
- Shielding housing material: die-cast nickel-plated zinc
- Cu conductor diameter:(J00026A4000, -1, -2, -4110, -4111, -4112)solid 0.51 – 0.64 mm (AWG24/1 – 22/1)stranded 0.46 – 0.76 mm (AWG27/7 – 22/7)stranded 0.61 – 0.78 mm (AWG24/19 – 22/19)* ; core diameter: 1.0 – 1.6 mm
- Outer diameter: 5.5 – 10.0 mm

- Reusable IDC: ≤ 4 cycles
- Temperature range: -40°C to 85°C
- PoE+ acc to IEEE 802.3at
- IP20
- Cable strain relief: AF13