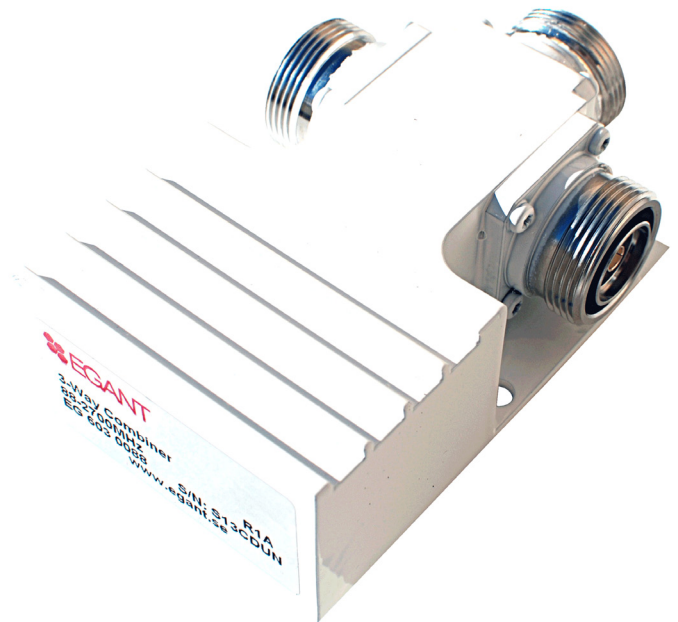




2-Way Combiner

88 - 2700 MHz

380 - 400 MHz / 1575 - 1576MHz



Combines up to 2 RBSs into the same antenna system

The 2-Way combiner enables the connection of 2 Radio Base Stations to the combiner. The combiner combines the signal and equally splits the signals between the antenna ports.

This is a highly important function when designing shared antenna systems wishing to connect multiple RBSs to the shared antennas.

Innovative design

The 2-Way combiner is a broad band and low loss product design. It is intentionally designed for low insertion loss and low intermodulation.

The benefits of using our 2-Way combiner are:

- Lower insertion loss
- Fewer system components
- Superior antenna isolation
- Greater system quality
- Cost effective design improvement

Technical Specifications for the 2-Way Combiner

Below are some typical data. For more detailed information, please contact us.

Electrical Specifications		
Product number:	EG 603 0088	EG 603 0089
Passband:	88 - 2700 MHz	380 - 400 / 1575 - 1576 MHz
Coupling:	3.0 +/- 0.2 dB	3.0 +/- 0.2 dB
Input return loss:	> 8.0 dB	> 12.0 dB, typ 16dB
Isolation between ports:	3 dB +/- 1.0 dB	3 dB +/- 1.0 dB
Max input power/port:	200 W	200 W
Max peak power:	3 kW	3 kW
Impedance in/out:	50 Ohm	50 Ohm
Mechanical Specifications		
Dimensions (W x H x D):	100 x 40 x 70 mm	100 x 40 x 70 mm
Connectors:	7/16 (f)	7/16 (f)
Weight:	0,8 kg	0,8 kg
Environmental Specifications		
Temp. range (normal operation):	-35 to +65° C	-35 to +65° C
Humidity:	Relative 5 - 100%	Relative 5 - 100%
Sealing:	IP65	IP65

Egant reserves the right to change this product specification at any time without notice.

Egant AB
Box 945
SE-114 79 Stockholm
Sweden
Phone: +46 (0)8 62 00 650
E-mail: info@egant.se
www.egant.se