

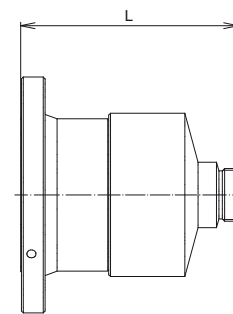
ÜBERGANGSVERBINDER ADAPTORS

- hervorragende elektrische Eigenschaften
(Bsp. VSWR ≤ 1,02 / Rückflussdämpfung ≥ 40 dB bis 1 GHz - Ausnahme: 6 1/8" Adapter bis 800 MHz)
- für Außenmontage
- Übergangsverbinder auch in Kurzbauweise

- excellent electrical performance
(e.g. VSWR ≤ 1.02 / return loss ≥ 40 dB up to 1 GHz - exception: 6 1/8" adaptor up to 800 MHz)
- for outdoor application
- also short length adaptors available

Übergänge Adaptors

Anschluss 1 Connector 1		Anschluss 2 Connector 2		Länge L Length L	Gewicht Weight	Bestellnummer Part number
N	Kuppler / female	SMA	Stecker / male	20.7 mm	0.028 kg	BN 64 06 82
N	Kuppler / female	N	Kuppler / female	36.2 mm	0.040 kg	BN 29 37 50
7-16	Stecker / male	N	Stecker / male	30.7 mm	0.083 kg	BN 29 38 00
7-16	Stecker / male	N	Kuppler / female	15.3 mm	0.073 kg	BN 19 44 00
7-16	Kuppler / female	N	Stecker / male	34.9 mm	0.074 kg	BN 29 39 00
7-16	Kuppler / female	N	Kuppler / female	24.5 mm	0.078 kg	BN 29 40 00
7-16	Kuppler / female	7-16	Kuppler / female	29.0 mm	0.088 kg	BN 19 64 00
7/8"	EIA	N	Kuppler / female	59.1 mm	0.25 kg	BN 90 25 00
7/8"	EIA	7-16	Kuppler / female	58.2 mm	0.24 kg	BN 80 56 00
7/8"	EIA	7-16	Stecker / male	47.2 mm	0.24 kg	BN 81 80 00
13-30	Stecker / male	7-16	Kuppler / female	61.7 mm	0.45 kg	BN 90 83 00
1 5/8"	EIA	N	Kuppler / female	84.7 mm	0.81 kg	BN 90 36 00
1 5/8"	EIA	7-16	Kuppler / female	82.4 mm	0.86 kg	BN 90 92 00
1 5/8"	EIA	7/8"	EIA	108.5 mm	1.13 kg	BN 91 21 00
1 5/8"	EIA	13-30	Kuppler / female	115.9 mm	1.21 kg	BN 91 43 00
1 5/8"	EIA	13-30	Stecker / male	105.5 mm	1.19 kg	BN 91 42 00
3 1/8"	EIA	N	Kuppler / female	113.0 mm	2.28 kg	BN 94 57 00
3 1/8"	EIA	7-16	Kuppler / female	119.7 mm	2.40 kg	BN 90 93 08
3 1/8"	EIA	1 5/8"	EIA	152.0 mm	3.49 kg	BN 91 75 00
4 1/2"	EIA ¹⁾	7-16	Kuppler / female	180.0 mm	4.66 kg	BN 72 89 00
4 1/2"	EIA ¹⁾	3 1/8"	EIA	177.0 mm	5.69 kg	BN 71 50 00
6 1/8"	EIA	3 1/8"	EIA	194.0 mm	8.15 kg	BN 91 89 00



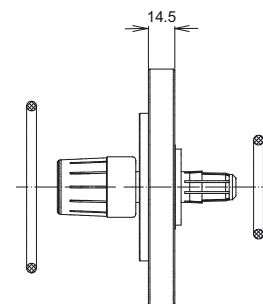
Typische Zeichnung
Typical drawing

Übergänge in Kurzbauweise, mit eingebautem Kupplungselement Adaptors in short length version, with built-in coupling element

Anschluss 1 Connector 1		Anschluss 2 Connector 2		Länge L Length L	Gewicht Weight	Bestellnummer Part number
1 5/8"	EIA	7-16	Kuppler / female	34.9 mm	0.61 kg	BN 10 74 10
1 5/8"	EIA	7/8"	EIA	24.00 mm	0.83 kg	BN 91 21 10
3 1/8"	EIA	1 5/8"	EIA	15.00 mm	2.01 kg	BN 91 75 10
4 1/2"	EIA ¹⁾	3 1/8"	EIA	21.75 mm	3.50 kg	BN 71 50 10
6 1/8"	EIA	7-16	Kuppler / female	109.9 mm	6.51 kg	BN 90 94 04
6 1/8"	EIA	3 1/8"	EIA	35.75 mm	5.73 kg	BN 91 89 10
6 1/8"	EIA	4 1/2"	EIA ¹⁾	39.95 mm	6.28 kg	BN 71 49 10

¹⁾ 339 IEC 50-105

SMS- und BT-Übergangsverbinder sind bei den jeweiligen Rohrleitungsgrößen aufgeführt
SMS- and BT-adaptors are listed at the corresponding rigid line sizes



Typische Zeichnung
Typical drawing