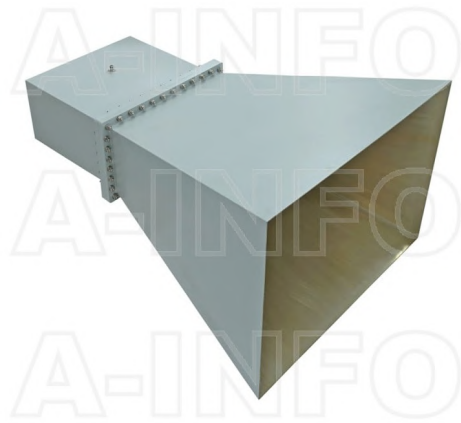


LB-2300-10-C-NF Standard Gain Horn Antenna 0.32-0.49GHz 10dB Gain  
N Type Female



Standard Gain Horn Antenna Operating From 0.32GHz to 0.49GHz With a Nominal 10dB Gain With N Type Female Connector

### Product Information

SKU	LB-2300-10-C-NF
-----	-----------------

### Description

Standard Gain Horn Antenna LB-2300-10-C-NF, operating from 0.32 to 0.49GHz with a nominal 10dB gain and low VSWR 1.25:1 with N Type Female connector output. The model LB-2300-10-C-NF has uniform gain through its frequency span, providing efficient performance characteristics and directionality. It can handle 500W continuously and 3000W peak power. Constructed of lightweight corrosion-resistant aluminum, the antenna will provide years of trouble-free indoor and outdoor service. This standard gain horn antenna is linearly polarized and ideally suited for EMI testing, direction finding, surveillance, antenna gain and pattern measurements and other applications.

### Technical Specification

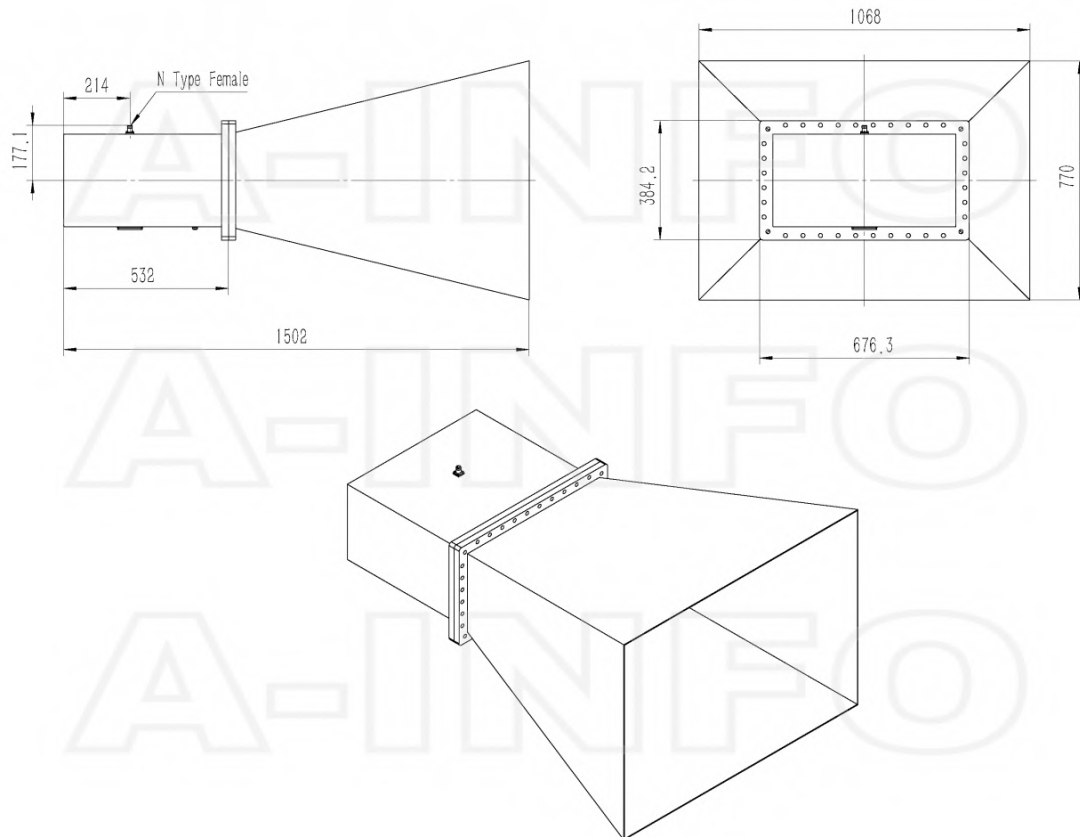
Electrical Specification		Interface	
Frequency, Min (GHz)	0.32	Output Type	Coaxial
Frequency, Max (GHz)	0.49	Connector	N Type
Waveguide Type	Rectangular	Connector Gender	Female
Waveguide Size EIA WR	WR2300	Mechanical Specification	
Gain, Typ (dBi)	10	Figure	C Type
Polarization	Linear	Body Material	Al
3dB Beamwidth, E-Plane, Typ (Deg.)	50	Finish	Chemical Conversion Coating, Gray Paint
3dB Beamwidth, H-Plane, Typ (Deg.)	46	Size, W (mm)	1068
Cross Pol. Isolation, Typ (dB)	30	Size, H (mm)	770
VSWR, Typ	1.25:1	Size, L (mm)	1502
Impedance, (Ohm)	50	Weight, (kg)	47
Power Handling, CW, (W)	500		
Power Handling, Peak, (W)	3000		

## Additional Information

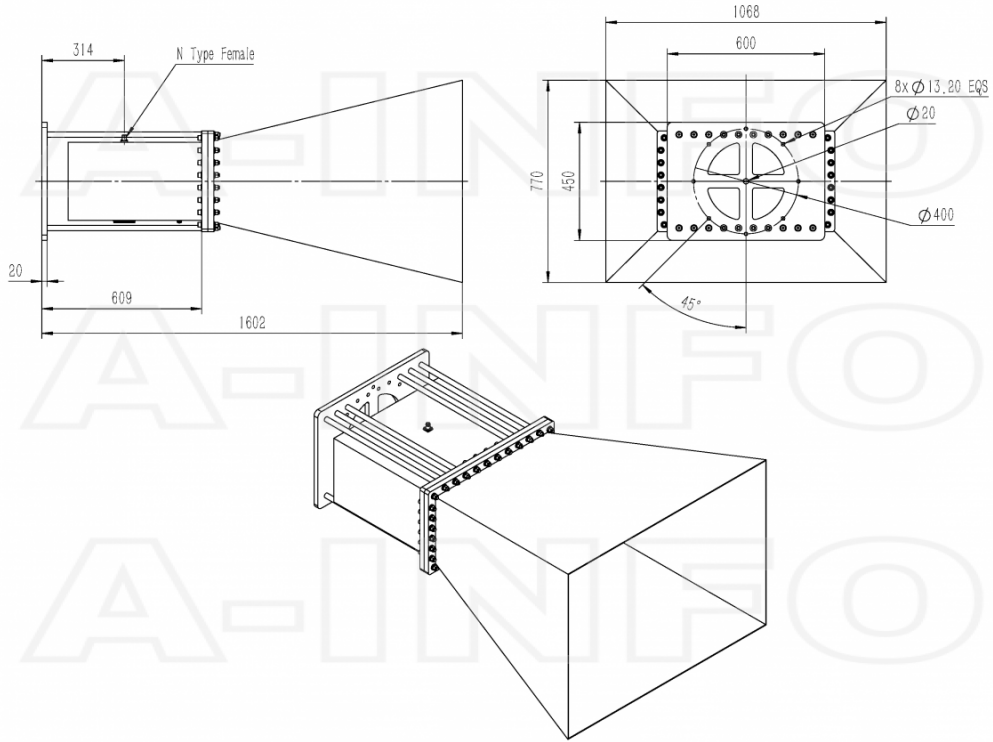
Application	General Purpose Indoor & Outdoor, Fixed	Solution for	Gain Reference Antenna Measurement Reflector Feed Far-field Measurement System Intergration Material Measurement
-------------	---	--------------	---

## Outline Drawing

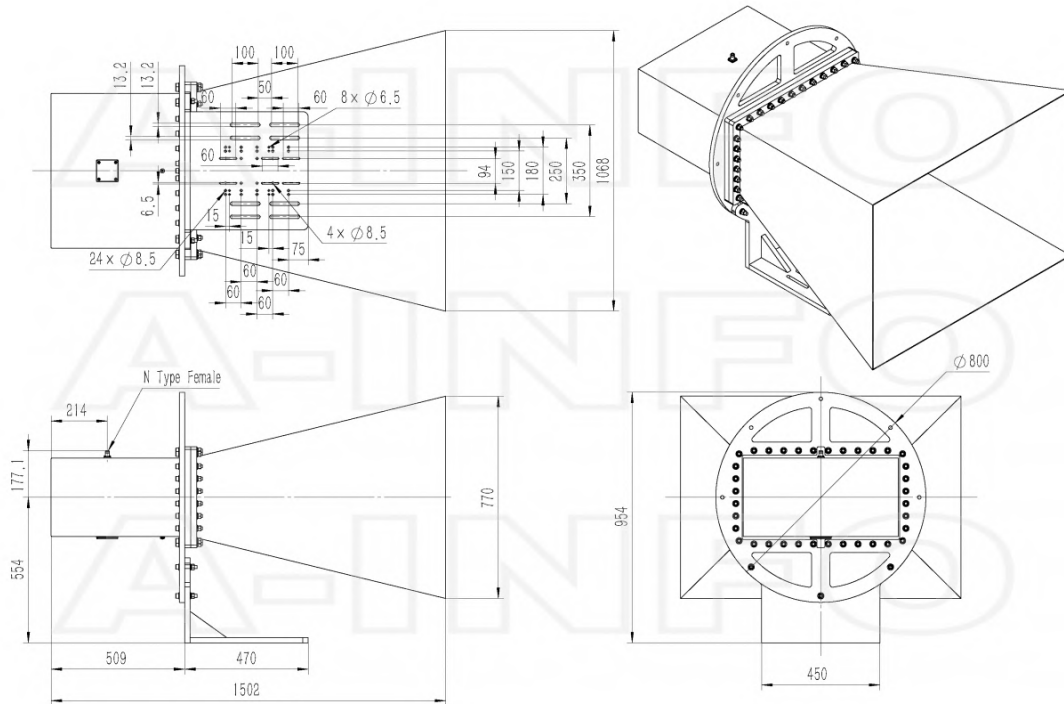
N-Female Output (P/N: LB-2300-10-C-NF)



N-Female Output with Round Mounting Bracket (Option, P/N: LB-2300-10-C-MB)

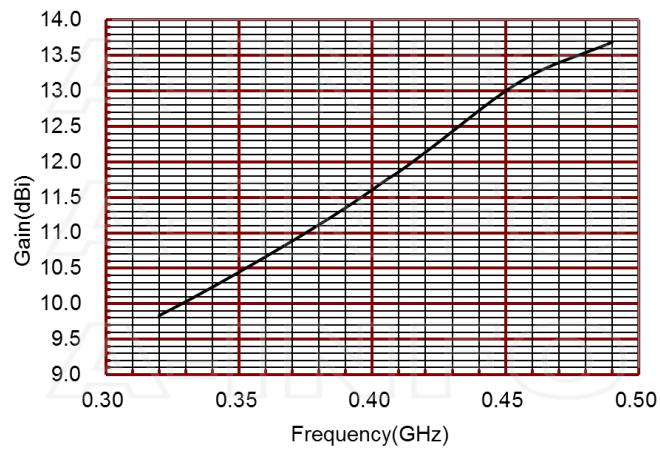


N-Female Output with L Type Mounting Bracket (Option, P/N: LB-2300-10-C-L)

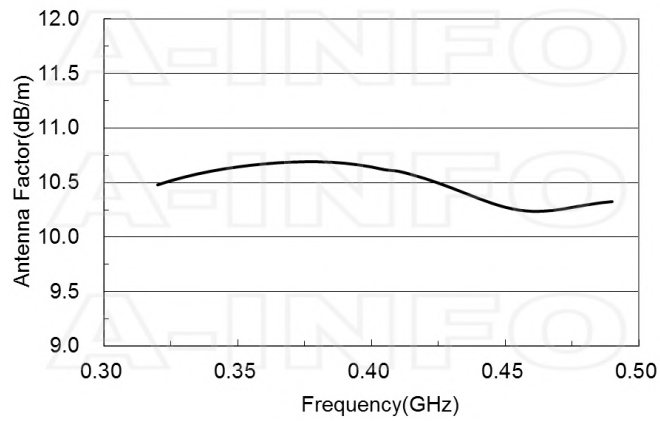


## Typical Test Results

### Gain



### Antenna Factor



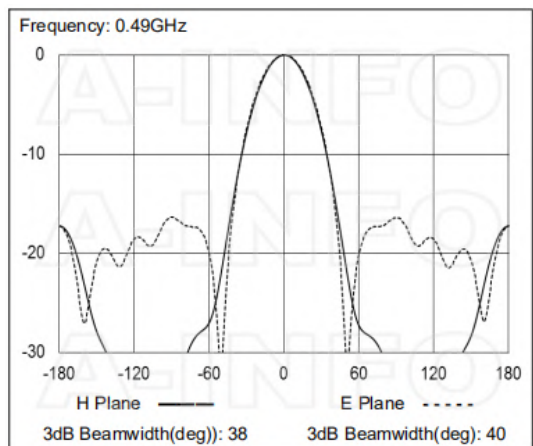
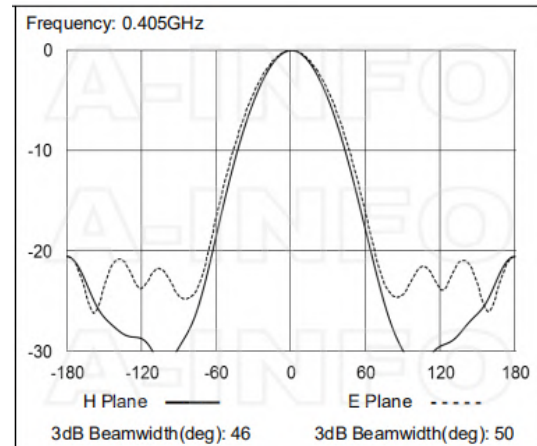
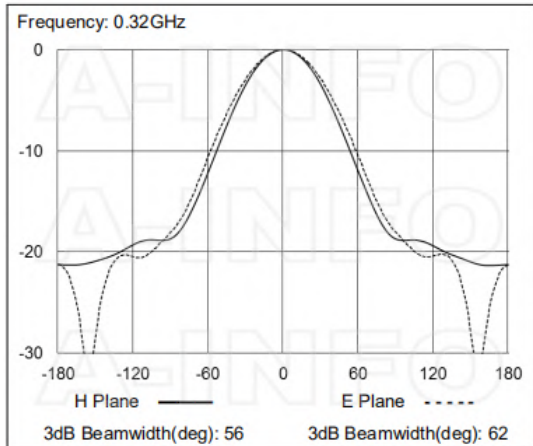
### Antenna Factor (Table)

Frequency (GHz)	Gain (dBi)	Antenna Factor (dB/m)	Frequency (GHz)	Gain (dBi)	Antenna Factor (dB/m)
0.320	9.83	10.48	0.410	11.86	10.60
0.325	9.93	10.52	0.415	12.00	10.57
0.330	10.03	10.55	0.420	12.14	10.54
0.335	10.13	10.58	0.425	12.28	10.50
0.340	10.24	10.60	0.430	12.43	10.45
0.345	10.34	10.63	0.435	12.58	10.40
0.350	10.45	10.64	0.440	12.72	10.36
0.355	10.56	10.66	0.445	12.87	10.31
0.360	10.66	10.67	0.450	13.00	10.27
0.365	10.77	10.68	0.455	13.12	10.25
0.370	10.89	10.69	0.460	13.23	10.24
0.375	11.00	10.69	0.465	13.32	10.24
0.380	11.11	10.69	0.470	13.40	10.25
0.385	11.23	10.69	0.475	13.47	10.27
0.390	11.35	10.68	0.480	13.54	10.29
0.395	11.48	10.66	0.485	13.61	10.31
0.400	11.61	10.64	0.490	13.69	10.33
0.405	11.74	10.62			

### VSWR



## Pattern



## Related Products



LB-2300-10-C-MB Round Type Mounting Bracket



LB-2300-10-C-L L type mounting bracket



Carrying Case\_LB-2300-10-C Al Alloy Carrying Case



NM-NM-A050-1000 Flexible Cable Assembly 1000mm DC-18GHz N Male to N Male



NM-NM-A050-1500 Flexible Cable Assembly 1500mm DC-18GHz N Male to N Male



NM-NM-A050-2000 Flexible Cable Assembly 2000mm DC-18GHz N Male to N Male



NM-NM-A050-3000 Flexible Cable Assembly 3000mm DC-18GHz N Male to N Male



NM-NM-A050-5000 Flexible Cable Assembly 5000mm DC-18GHz N Male to N Male



NM-NM-A050-10000 Flexible Cable Assembly 10000mm DC-18GHz N Male to N Male



NM-NM-A050-20000 Flexible Cable Assembly 20000mm DC-18GHz N Male to N Male



NM-NM-A100-500 Flexible Cable Assembly 500mm DC-18GHz N Male to N Male



NM-NM-A100-1000 Flexible Cable Assembly 1000mm DC-18GHz N Male to N Male



NM-NM-A100-1500 Flexible Cable Assembly 1500mm DC-18GHz N Male to N Male



NM-NM-A100-2000 Flexible Cable Assembly 2000mm DC-18GHz N Male to N Male



NM-NM-A100-3000 Flexible Cable Assembly 3000mm DC-18GHz N Male to N Male



NM-NM-A100-5000 Flexible Cable Assembly 5000mm DC-18GHz N Male to N Male

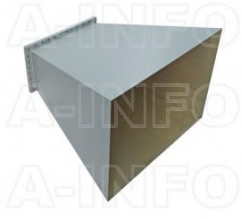


NM-NM-A100-10000 Flexible Cable Assembly 10000mm DC-18GHz N Male to N Male



NM-NM-A100-20000 Flexible Cable Assembly 20000mm DC-18GHz N Male to N Male

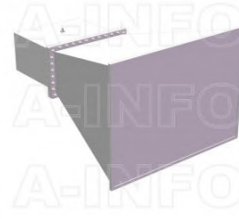
### Similar Products



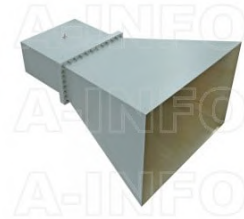
LB-2300-10-A Standard Gain Horn Antenna 0.32-0.49GHz 10dB Gain Rectangular Waveguide Interface



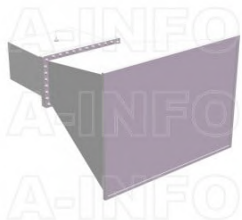
LB-2300-10-ASPO Standard Gain Horn Antenna 0.32-0.49GHz 10dB Gain Rectangular Waveguide Interface



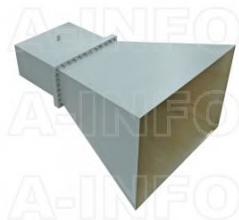
LB-2300-10-C-NFSPO Standard Gain Horn Antenna 0.32-0.49GHz 10dB Gain N Type Female



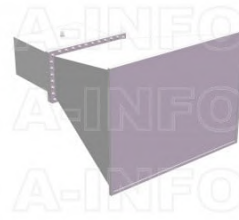
LB-2300-10-C-SF Standard Gain Horn Antenna 0.32-0.49GHz 10dB Gain SMA Female



LB-2300-10-C-SFSPO Standard Gain Horn Antenna 0.32-0.49GHz 10dB Gain SMA Female



LB-2300-10-C-7/16F Standard Gain Horn Antenna 0.32-0.49GHz 10dB Gain 7/16(DIN) Female



LB-2300-10-C-7/16FSPO Standard Gain Horn Antenna 0.32-0.49GHz 10dB Gain 7/16(DIN) Female

### About this Datasheet

<ul style="list-style-type: none"> <li>● <b>Product Information</b> Product Link: <a href="https://www.ainfoinc.com/lb-2300-10-c-nf-standard-gain-horn-antenna-0-32-0-49-ghz-10db-gain-n-type-female">https://www.ainfoinc.com/lb-2300-10-c-nf-standard-gain-horn-antenna-0-32-0-49-ghz-10db-gain-n-type-female</a> Data subject to change without notice. © A-INFO INC. 2024. All Rights Reserved</li> </ul>	<ul style="list-style-type: none"> <li>● <b>Contact Us</b> Address: 60 Tesla, Irvine, CA 92618, USA  Website: <a href="http://www.ainfoinc.com">www.ainfoinc.com</a>  Email: <a href="mailto:sales@ainfoinc.com">sales@ainfoinc.com</a></li> </ul>	<ul style="list-style-type: none"> <li>● <b>Phone &amp; Fax</b> Phone: +1-949-639-9688 +1-949-639-9608  Fax: +1-949-639-9670</li> </ul>
---	--	---