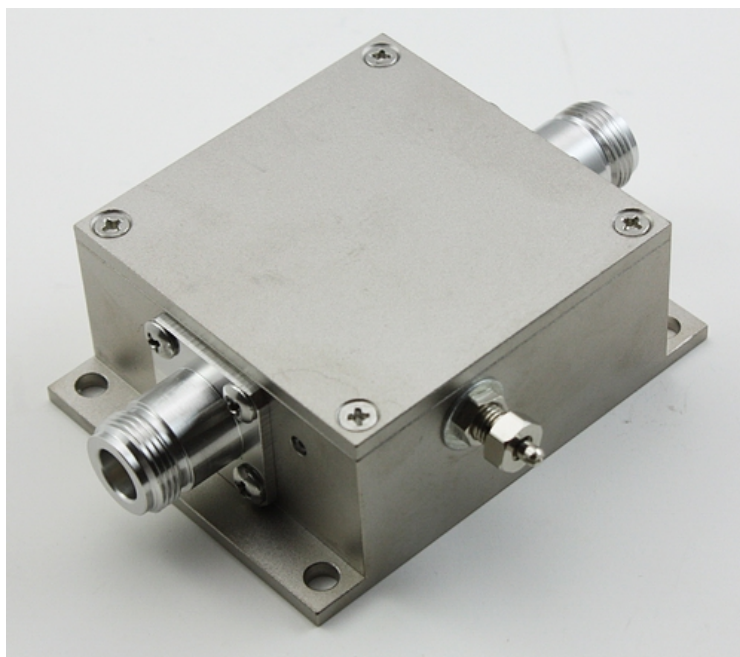


## GPS Line Amplifier



**Model: GPAMP-XX-N-F/F (Fixed Gain)**

**Model: GPAMP-XX/ADJ-N-F/F (Adjustable Gain)**

***Applications:***

***GPS Signal Indoor, Timing, Survey, Wireless Communication etc.***

***Gain : 0~30dB, Variable options available.***

***Response For***

***GPS:L1,L2,L2C,L5;***

***Glonass:G1,G2;***

***Galileo:L1,E1,E2,E5(E5a,E5b),E6;***

***Beidou2:B1,B2,B3;***

***IRNSS L1,L5;***

***OmniStar***

***Pass DC***

# SPECIFICATION OF GPS LINE AMPLIFIER



## Description:

The GPAMP series Line amplifier is a single stage gain block in a small form factor that covers the GPS, Galileo, and GLONASS, Beidou2 frequencies. The device features 0~30dB gain and a noise figure less than 2dB. Since the product consumes less than 20mA, the device can be placed in line with the receiver antenna and can be powered by the GPS receiver's antenna voltage output.

The GPAMP is available with more options than any competitive product in the market.

## Specifications:

Electrical Specifications, Operating Temperature -40to 85°C

Parameter		Conditions	Min	Typ	Max	Units		
Freq. Range		In-Output ports, 50Ω	1.1		1.7	GHz		
In &Out Imped.		In, all output ports	50			Ω		
Gain	1227MHz	In-Output ports -45dBm Input Level	28	30	32	dB		
	1575MHz		28	30	32			
Adjustable gain	1227MHz		Max	29	30		31	
			Min	-4	-2		0	
	1575MHz		Max	29	30		31	
			Min	-2	0		1	
Input SWR							2.5:1	-
Output SWR							2.5:1	-
Nois Figure					2	dB		
Gain Flatness					3	dB		
Current balance					0.5	dB		
Phase Balance					1.0	deg		
Group Delay Flatness					1	ns		
Device current					16	mA		
DC IN		The DC input on the input or output port	3	5	16	VDC		
AC supply			110~220			AC		
Max RF Input		Maximum lossless RF input			0	dBm		
Operating temperature			-40		85	°C		

Note: The product include the 110V~220VAC power supply.



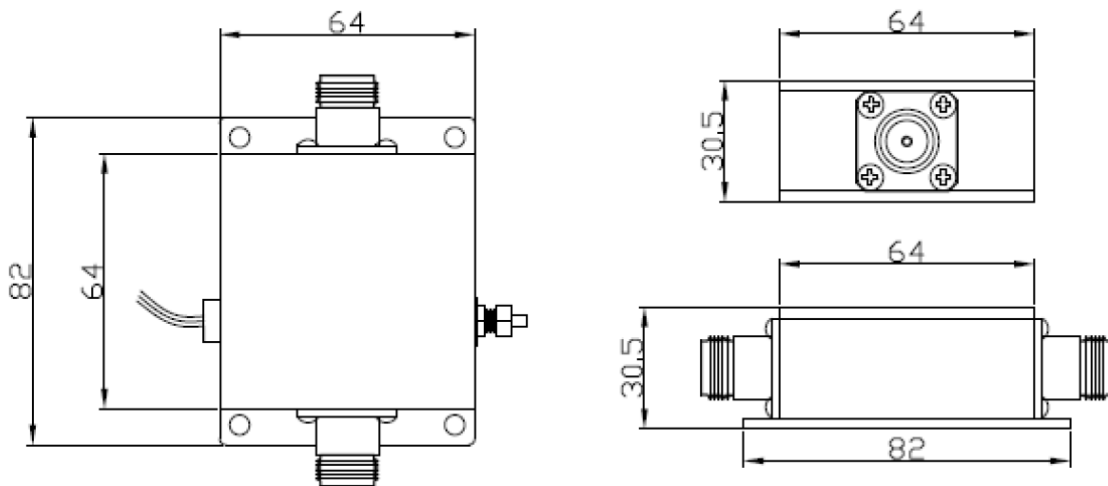
# SPECIFICATION OF GPS LINE AMPLIFIER



Telecommunication Technology & Engineering Accessories

Rev.V1.2

## Product Drawing:



## Applications:

