

7-16 DIN Female Connector for 7/8" RADIAFLEX® cable

Product Description

These single-piece high performance coaxial cable connectors are designed specifically to provide the highest quality connector-cable interface while simplifying and speeding up the attachment of connectors to RADIAFLEX® cables. The connectors provide outstanding value to users because they permit quick, easy and reliable installation at any location, thereby allowing the operator flexibility while saving installation time and money. They attach to prepared cable in one piece assuring error-free attachment. All connectors are fully tested for mechanical and electrical compliance specifications. They are available in all popular cable sizes in both type N and 7-16 DIN interface.



RADIAFLEX connector

Features/Benefits

- Single-piece design for Fast and Easy Installation - Reliable and simple attachment avoids unnecessary connector adjustments and provides outstanding performance. Saves time and provides cost savings.
- Robust Mechanical Design - Low and consistent IM performance.
- Excellent Electrical Performance - Low VSWR
- Totally Waterproof - Assures safe, long term operation in the harshest of environments.

Technical Specifications

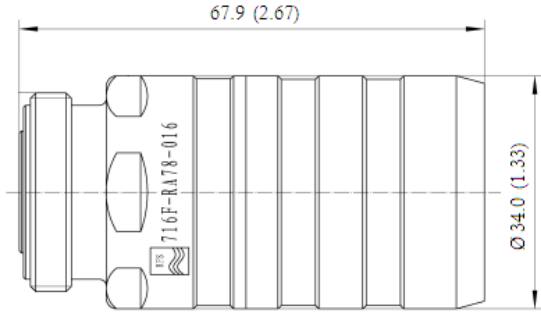
Transmission Line Type	Coaxial Cable
Cable Size	7/8"
Cable Type	Radiating
Model Series	all ALF, RLK and RAY78-50A-Series
Connector Interface	7-16 DIN
Nominal Impedance, ohms	50
Connector Type	Straight
Sealing Method	Shrinking Sleeve
Gender	Female
Length, mm (in)	67.9 (2.67)
Outer Diameter, mm (in)	34 (1.33)
Weight, kg (lb)	0.17 (0.37)
Body Material	Brass / Plating: Tri metal
Inner Contact Material	Copper / Plating: Silver
Inner Contact Attachment	Spring Finger / Plating: silver
Outer Contact Attachment	Spring loop / Plating: silver
Maximum Frequency, GHz	3.7
Poly Hook Spanner, mm (in)	PHS 60-90-5 Ø 60-90 (2.3-3.5) Pin 5 (0.2)
Waterproof Level	IP68

Notes**Other Documentation**

[1000009163-01_Application Note_Installation of Heat Shrink Sleeves for additional sealing of Connectors.pdf](#)
 Installation Instruction: [2800118-C_Inst Con_RA78-114-158_Con. 015 and 016 series.pdf](#)



7-16 DIN Female Connector for 7/8" RADIAFLEX® cable



All information contained in the present datasheet is subject to confirmation at time of ordering