

## RF X-TREME™ Cross Polarized Penta-Band Antenna, 694-2690MHz, 65deg, 16-18dBi, 2.6m, VET, 0-10deg, Integrated RET

This Penta-band antenna (10 ports) includes Ultra-Broadband & multi-band services for site solutions in high traffic areas. It can be used for multiple bands such as LTE700, LTE800, CDMA, GSM, DCS, PCS, AWS, UMTS, LTE1800, LTE2300 and LTE 2600. It is an ideal choice for site upgrades and new deployments where five frequency bands, or MIMO/4 RX diversity, is used to add capacity and increase coverage. The antenna has an integrated remote electrical tilt (RET) solution on all 5 cross-polar antenna arrays for easy installation. Two AISG connectors are located on the antenna bottom plate.

### FEATURES / BENEFITS

- Penta-band cross polarized antenna with 5 arrays (10 ports), 1x 694-960/4x 1695-2690, for complex system configurations and maximum flexibility
- Ultra-broadband design for LTE700, LTE800, LTE1800 and LTE2600 compatibility
- Variable electrical downtilt — provides enhanced precision in controlling intercell interference
- The tilt is infield adjustable 0-10 deg on each cross polarized antennas
- Enhanced tilt range — ideal for applications in dense areas
- Enable MiMo 4x2 or 4-way RX diversity — ideal solution for LTE advanced
- Integrated Remote Tilt — reduces installation time
- AISG 2.0 interface towards BTS or RRH — can be used by all AISG compliant OEMs
- Antenna with AISG — flexible connections towards BTS and RRH
- High suppression of upper sidelobes — reduces cell interference
- Design incorporates low windload and low weight — minimizes tower loading
- Quick and easy to install — reduces installation time and costs
- High reliability — designed to last in a tower top environment



### Technical Features

#### ELECTRICAL SPECIFICATIONS

Frequency Range	MHz	694-793	790-862	880-960	1695-1880	1850-1990	1920-2170	2300-2400	2500-2690
Gain	dBi (dBd)	16.0 (13.9)	16.5 (14.4)	16.7 (14.6)	16.7 (14.6)	16.9 (14.8)	17.2 (15.1)	17.4 (15.3)	17.8 (15.7)
Horizontal Beamwidth	deg	74	71	69	66	63	60	60	65
Vertical Beamwidth	deg	8.6	7.5	7	7.2	6.5	6.1	5.4	5.2
Electrical Downtilt Range	deg	0-10							
1st Upper Sidelobe Suppression	dB	17 Typical							
Front-To-Back Ratio	dB	25							
Polarization		Dual pol +/-45°							
VSWR		< 1.5:1							
Isolation between Ports	dB	>26							
3rd Order IMP @ 2 x 43 dBm	dBc	>153							
Impedance	Ohms	50							
Maximum Power Input	W	500	500	500	300	300	300	270	270

#### MECHANICAL SPECIFICATIONS

Lightning Protection		Direct Ground							
Connector Type/Location		(10) 7-16 Long Neck Female, (1) AISG Male, (1) AISG Female/Bottom							
AISG Standard		AISG 2.0 Compliant							
Dimensions - HxWxD	mm (in)	2769 x 340 x 200 (109.0 x 13.4 x 7.9)							
Weight w/o Mtg Hardware	kg (lb)	42 (92.6)							
Survival/Rated Wind Speed	km/h (mph)	200 (125) / 150 (93.2)							
Applied Wind Load Standard		DIN 1055-4							
Wind Load @ Rated Wind, Front	N (lbf)	468 (105)							
Wind Load @ Rated Wind, Side	N (lbf)	657 (148)							
Wind Load @ Rated Wind, Rear	N (lbf)	630 (142)							

#### TESTING AND ENVIRONMENTAL

Operation temperature	°C (°F)	-40 to 60 (-40 to 140 )
-----------------------	---------	-------------------------

#### MATERIAL

Radome Material/Color		ASA/Light Grey RAL7035
Mounting Hardware Material		Diecasted Aluminum and Stainless Steel
Radiating Element Material		PCB and Brass

APXVB4L26X-C-I20

REV: C

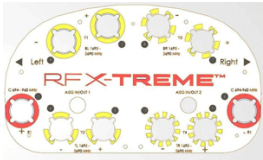
REV DATE: 08.07.2016

[www.rfsworld.com](http://www.rfsworld.com)

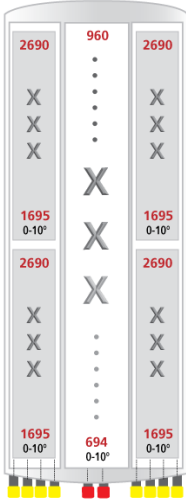


RF X-TREME™ Cross Polarized Penta-Band Antenna, 694-2690MHz, 65deg, 16-18dBi, 2.6m, VET, 0-10deg, Integrated RET

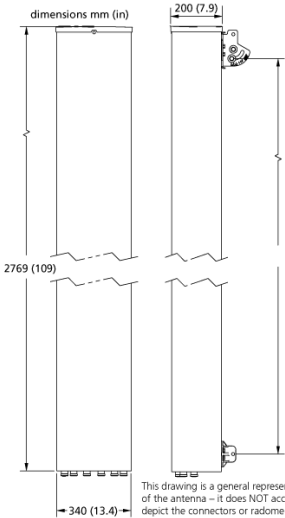
Reflector Material		Aluminum
ORDERING INFORMATION		
Packing Dimensions, HxWxD	mm (in)	2873 x 444 x 413 (113.1 x 17.5 x 16.3)
Mounting Hardware		APM40-2
Mounting Pipe Diameter	mm (in)	60 - 120 (2.36 - 4.72 )
Mounting Hardware Weight	kg (lb)	3.4 (7.5)



Antenna End Plate



Antenna Array



Antenna Drawing

External Document Links

- APM40 Series Datasheet
- APM40 Series Installation Instructions

Notes

Please note: RET upgrades not available for APXVB4L26X-C — please order the APXVB4L26X-C-I20