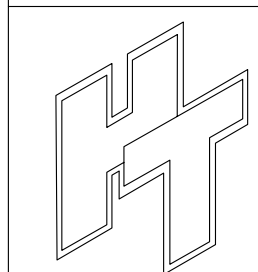
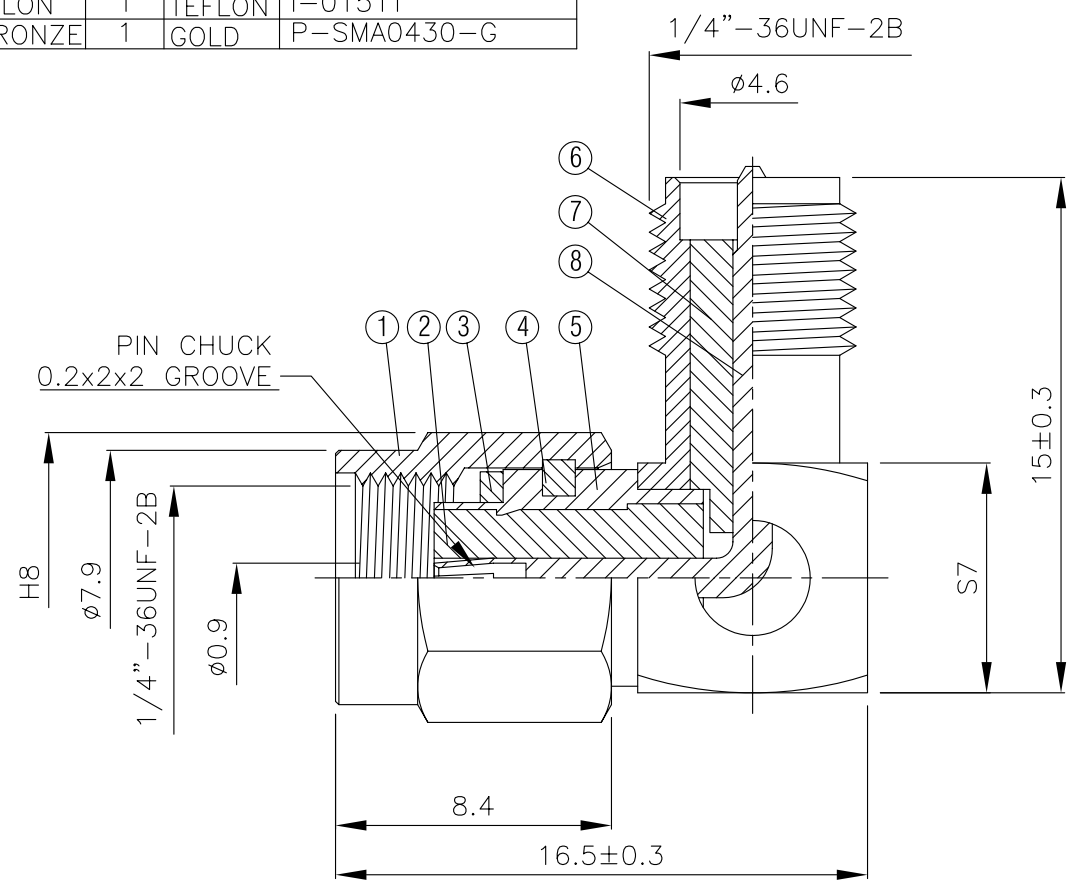
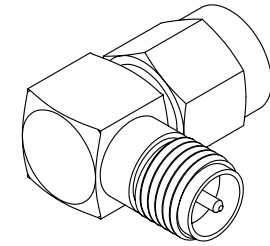


| NO | DESCRIPTION | MATERIAL | Q'TY | FINISH | REMARK |
|----|--------------|-----------|------|--------|-------------|
| 1 | BODY 1 | BRASS | 1 | NICKEL | B-SMA0043-N |
| 2 | INSULATION 1 | TEFLON | 1 | TEFLON | I-0126T |
| 3 | GASKET | SI RUBBER | 1 | RUBBER | RU-0008 |
| 4 | WASHER | PH.BRONZE | 1 | NICKEL | W-0012 |
| 5 | BODY 2 | BRASS | 1 | NICKEL | B-SMA0626-N |
| 6 | BODY 3 | BRASS | 1 | NICKEL | B-SMA0317-N |
| 7 | INSULATION 2 | TEFLON | 1 | TEFLON | I-0151T |
| 8 | PIN | PH.BRONZE | 1 | GOLD | P-SMA0430-G |



HUS-TSAN GROUP CO., LTD.
P.O.BOX 40-76.TAINAN.TAIWAN,R.O.C.
TITLE SMA MALE ANGLE - FEMALE ADAPTOR
TECERSE POLARITY
PART NO. SMA-12-TGN-RP
DRAWING NO. SMA 12 TGN RP

| | | | |
|----------|------|------|----------|
| DRAWN | MARY | DATE | 96.03.31 |
| CHECKED | 蘇姿潔 | DATE | |
| Q.A. | 馮健華 | DATE | |
| APPROVAL | 徐燦霖 | DATE | |
| REVISION | | DATE | |

| | | | |
|--------------------------------------|----------------|------|---|
| DIMENSIONS ARE IN MILLIMETERS | | | |
| UNLESS OTHERWISE SPECIFIED TOLERANCE | | | |
| 0.5-5=±0.2 | 120-315=±1 | | |
| 5-30=±0.4 | 315-1000=±1.6 | | |
| 30-120±0.6 | 1000-2000=±2.4 | | |
| SCALE | 4:1 | SIZE | A |

| | |
|-------------|----------|
| REVISION | |
| DESCRIPTION | ENGINEER |
| | |
| | |