

MATERIAL & FINISH:

- 1 BODY: BRASS, NICKEL PLATED
- 2 CENTER CONTACT: PHOSPHOR BRONZE, GOLD PLATED
- 3 INSULATOR: PTFE

ELECTRICAL DATA:

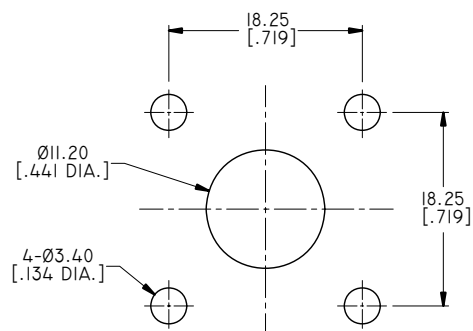
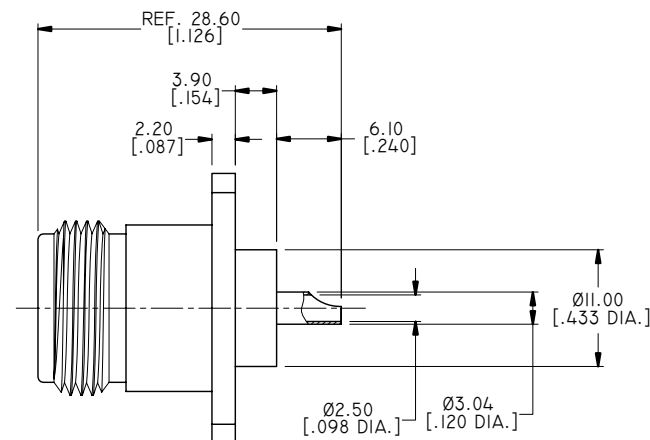
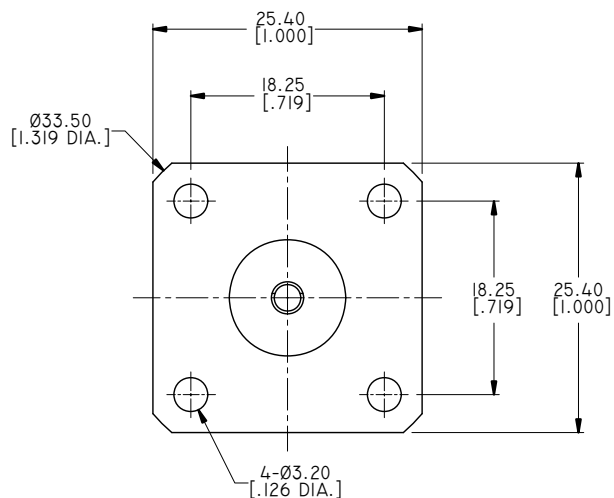
- 1 IMPEDANCE: 50 Ω
- 2 FREQUENCY RANGE: DC~11 GHz

ENVIRONMENTAL DATA:


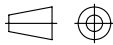
- 1 TEMPERATURE RANGE: -55°C~+125°C
- 2 2011/65/EU (RoHS): COMPLIANT

REVISIONS

REV.	DESCRIPTION	DATE	APPROVED
A	INITIAL RELEASE	09/16/08	J. QU
B	1. 1.25 [.049] WAS 1.00 [.039] 2. 4.20 [.165] WAS 4.00 [.157] 3. 30.10 [1.185] WAS 29.60 [1.165]	07/05/17	J. QU



RECOMMENDED MOUNTING HOLE

DRAWN	X. B. YANG	DATE	07/05/17	 ...we create connection for technologies			
CHECKED	L. YANG	DATE	07/05/17				
APPROVED	J. QU	DATE	07/05/17				
UNLESS OTHERWISE SPECIFIED DIMENSIONS ARE IN MILLIMETERS, DIMENSIONS IN [] ARE IN INCHES FOR CUSTOMER REFERENCE ONLY UNLESS OTHERWISE SPECIFIED TOLERANCE ARE:				THESE DRAWINGS AND SPECIFICATIONS ARE THE PROPERTY OF ANOISON ELECTRONICS LTD AND SHOULD NOT BE USED WITHOUT WRITTEN PERMISSION COPYRIGHT © 2017 ANOISON ELECTRONICS LTD			
.XX ±0.13 [.005"] .X ±0.20 [.008"] X ±0.50 [.019"] .X° ±1° X° ±2°				TITLE N STRAIGHT FEMALE 4 HOLE FLANGE WITH SOLDER POT CONTACT			
VIEW 				PART NO. ANO 5112-3017			
SIZE A3		SCALE 2:1		SHEET 1/1		REV. B	