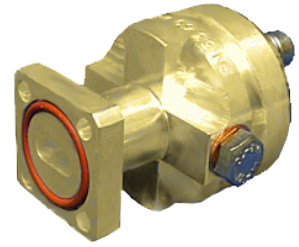




Connector for FLEXWELL® elliptical waveguide E250, PBR220 Flange

Product Description

Standard connector for FLEXWELL® elliptical waveguide E250 with PBR220 flange, gasket with shrinking sleeve sealed frequency range: 24.25 - 26.5 GHz



Features/Benefits

Superior Design

- Due to the precise manufacturing no tuning screws are necessary
- The terminations are brass passivated for good electrical performance
- A gas inlet is included

Quick & Easy Installation

- Different flaring tools are available

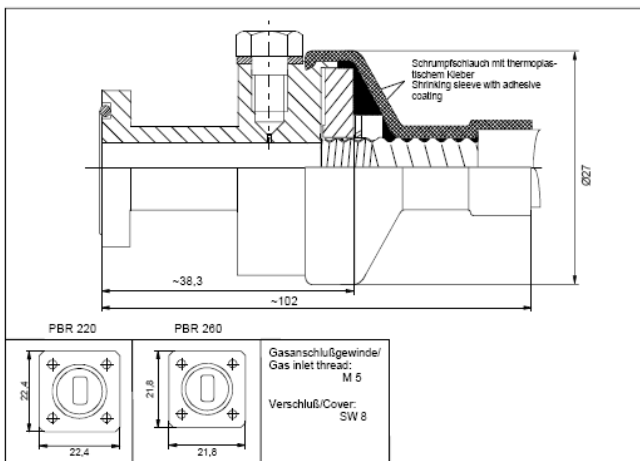
Technical Specifications

Transmission Line Type	Elliptical Waveguide
Cable Type	E250
Model Series	E250 Series
Connector Interface	PBR220
Connector Type	Fixed
Sealing Method	Gasket with Shrinking Sleeve
Connector Frequency Range, GHz	24.25 - 26.5
Plating Connector	Brass
Length, mm (in)	38 (1.5)
Outer Diameter, mm (in)	32 (1.3)
Weight, kg (lb)	0.20 (0.44)
Waterproof Level	IP68
Gas inlet	M5 x 0.8

Notes

Other Documentation

Installation Instruction: [2800039-b.pdf](#)



All dimensions are in mm

All information contained in the present datasheet is subject to confirmation at time of ordering



Connector for FLEXWELL® elliptical waveguide E250, PBR220 Flange

All information contained in the present datasheet is subject to confirmation at time of ordering