

## General Description

The RFS APM70-3C mounting kits are suitable for all base station 3-sector cluster type antennas up to 2.6m in length.

Cluster antennas are used on sites where low impact aesthetics are required for site approval.

## Benefits

- One mount kit fits all.  
This single mount kit can be used on the RFS range of CDMA800, GSM900, GSM1800, PCS1900, UMTS2100 and all multiband antennas.
- Low profile for minimal visual impact.
- Reduction of site costs due to easy and fast installation.

## Features

- Individual azimuth adjustment for each antenna
- Fits to mounting pipe 75 - 120 mm diameter.
- Direct mount or upgradable for mechanical downtilt.
- Suitable for industrial and marine environments.

## Mounting Options

### • Direct Mount (Standard)

When used as a direct mount the antennas are connected to the APM70-3C mount kit. This attachment occurs via the standard global interface brackets on the back of the antenna.

**Parts requirement:**

- 1x APM70-3C Mount Kit
- 3x APM40-E4 Interface kits for High band antennas. (normally supplied with antenna)

### • Downtilt Mount (Optional) - ordered separately

Full downtilt adjustment can be provided by use of the optional APM40-E1 beam upgrade kit and APM40-E2 scissor kits in conjunction with the APM70-3C mount kit.

**Tilt ranges achievable are as follows:**

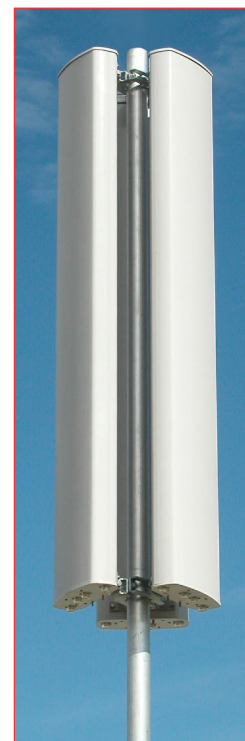
- 0 - 7.5° for 2.6m antenna
- 0 - 10° for 2m antenna
- 0 - 15° for 1.3m antenna

**Parts requirements:**

- 1x APM70-3C Mount Kit
- 3x APM40-E1 Beam upgrade kits (order separately).
- 3x APM40-E2 Scissor upgrade kits (order separately).



High band Antenna cluster with APM70-3C direct mount kit with optional APM40-E4 interface kit attached to antennas.



Dualband GSM/DCS Antenna cluster with APM70-3C direct mount kit.



APM40-E4 Interface bracket assembly (highlighted) for high band antennas.



Dualband Antenna at 5deg tilt using APM70-3C plus optional APM40-E1 and APM40-E2 mounting kits

## Mechanical Specifications

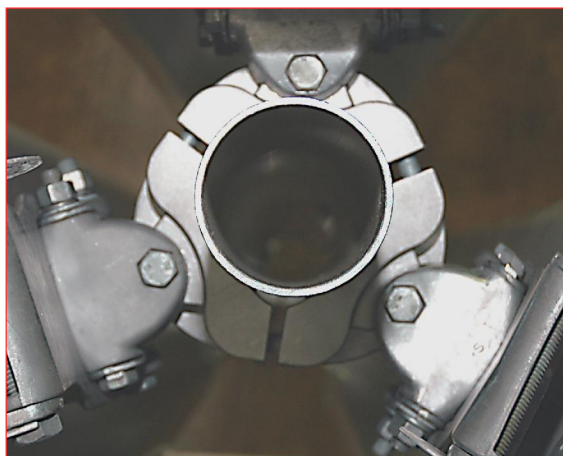
Model	APM70-3C	APM40-E1	APM40-E2
Weight of kit, kg (lb)	2.0 (4.4)	1.0 (2.2)	0.3 (0.7)
Mounting Pipe, mm (inches)	75-120 (2.9x4.7)	N/A	N/A
Mounting kit material	Aluminium	Aluminium	Aluminium
Packed size, H x W x D, mm (inches)	270x150x60 (10.6x5.9x2.4)	550x200x70 (21.6x7.9x2.7)	250x200x35 (9.8x7.9x1.4)
Packaging material	Cardboard carton	Plastic sleeve	Plastic sleeve
Tools required		18mm (3/4") AF Socket	



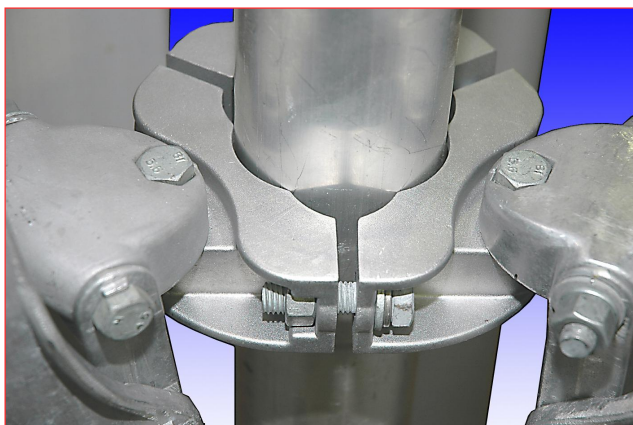
APM70-3C with standard direct mount (top section view)



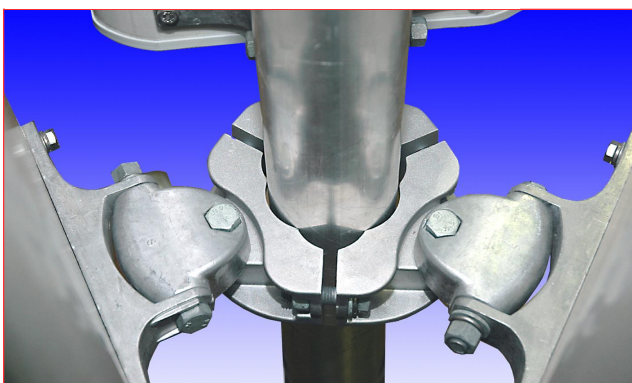
APM70-3C with downtilt option (top section)



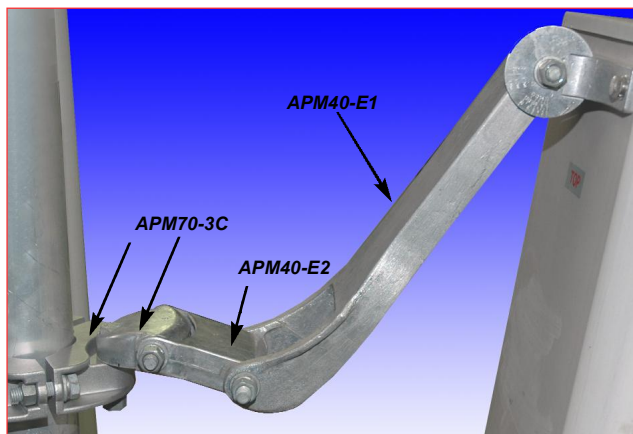
APM70-3C with downtilt option (viewed from above)



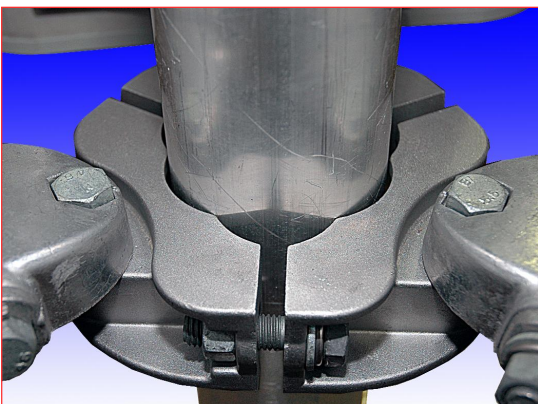
APM70-3C with downtilt option (top section) - zoom view



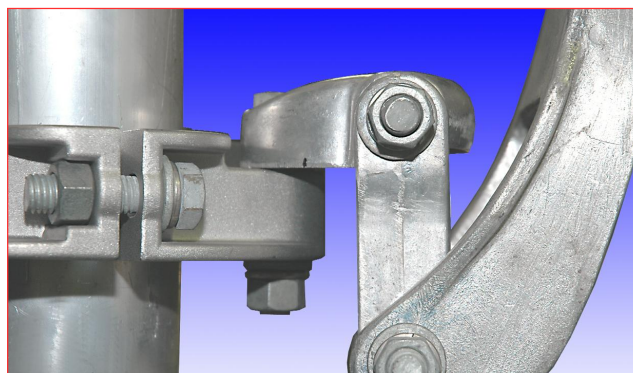
APM70-3C (bottom section)



APM70-3C with optional APM40-E1 & E2 scissor upgrade kit



APM70-3C (bottom section) - zoom view



APM70-3C with optional APM40-E1 & E2 (top section - side view)