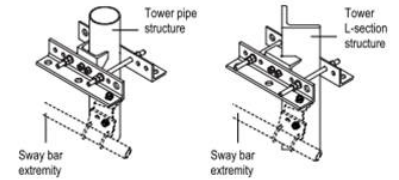




Sway Bar / Tower Universal Connecting Kit

**Product Description**

This connecting kit allows to attach the sway bar on any kind of support (pipes or L-sections) without needing to drill holes in the structure.



**Features/Benefits**

- The RFS universal fixation kit SMA-SKO-UNIVERSAL allows to attach the sway bars of RFS 3ft and 4ft antennas onto towers, without drilling holes.
- This kit has been engineered and dimensioned to match all scenarios that occur in the field (pipes and L-sections).
- The kit is made of materials (stainless steel and hot-dip galvanized steel) with proven mechanical and environmental performance.
- Easy to install, less bulky, robust, this kit contributes to a perfect installation of RFS 3ft and 4ft antennas, from both a safety and a sustainability perspective.

**Technical Specifications**

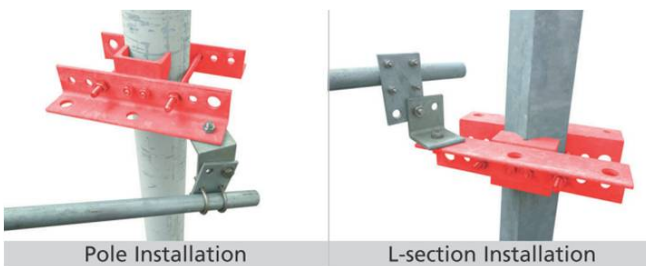
Product Type	Sway Bar Fixation Hardware
Kit Type	Sway Bar / Tower Fixation Kit
Diameter, m (ft)	0.9 (3), 1.2 (4)
Material	Stainless steel & Hot-dip galvanised steel

**Notes**

Tower pipe compatibility : Ø48mm up to Ø114mm. Tower L-section compatibility : L 40mm x 40mm up to L 110mm x 110mm. Compatible with RFS sway bar models in following diameters : Ø27mm and Ø33mm. Approximative weight : 3.5kg. Only the red marked parts are delivered with the kit (see picture).

**Other Documentation**

Sway bar / tower fixation installation kit: [NMT612-01e.pdf](#)



All information contained in the present datasheet is subject to confirmation at time of ordering