



WindMaster™ Cross Polarized Quad-Pol Antenna, 1710-2700, 65deg, 17.5-18.5dBi, 1.3m, VET, 0-12deg

Product Description

A combination of two X-Polarized antennas in a single radome, the RFS Quad-Pol antennas are designed for applications requiring a minimum number of antennas at a cell site and reduced tower loading. They offer the rugged construction of our new series of high band antennas that feature both high RF performance and energy efficiency. They are ideal for LTE 2.6, 3G, PCS, AWS, GSM 1800 and Mobile TV networks where high gain is required. These antennas are especially well suited for MIMO applications.

Features/Benefits

- Ultra-broadband design
- “Best-in-the-industry” gain values
- Two x-polarized broadband panels in a single narrow radome – reduced tower loading & lower profile
- Variable electrical downtilt – provides enhanced precision in controlling intercell interference
- High suppression of all upper sidelobes
- High front-to-back ratio



Technical Specifications

Electrical Specifications

Frequency Range, MHz	1710-1880	1850-1990	1920-2170	2200-2700
Horizontal Beamwidth, deg	65	65	65	63
Vertical Beamwidth, deg	7.5	7.3	7.0	5.5
Electrical Downtilt Range, deg			0-12	
Gain, Low Tilt, dBi	17.5	17.6	17.7	18.5
Gain, Mid Tilt, dBi	17.4	17.5	17.6	18.0
Gain, High Tilt, dBi	17.3	17.4	17.5	17.5
1st Upper Sidelobe Suppression, dB		17 Typical		
Front-To-Back Ratio, dB		Typically 30		
Polarization		Dual pol +/-45°		
VSWR		< 1.5:1		
Isolation between Ports, dB		>30		
3rd Order IMP @ 2 x 43 dBm, dBc		>153		
Impedance, Ohms		50		
Maximum Power Input, W	300	300	300	270
Lightning Protection		Direct Ground		
Connector Type/Location		(4) 7-16 Long Neck Female/Bottom		

Mechanical Specifications

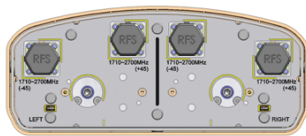
Dimensions - HxWxD, mm (in)	1375 x 288 x 118 (54.1 x 11.3 x 4.6)
Weight w/o Mtg Hardware, kg (lb)	13.5 (29.8)
Survival/Rated Wind Speed, km/h (mph)	200 (125) / 150 (93.2)
Applied Wind Load Standard	DIN 1055-4
Wind Load @ Rated Wind, Front, N (lbf)	400 (90)
Wind Load @ Rated Wind, Max., N (lbf)	443 (100)
Wind Load @ Rated Wind, Side, N (lbf)	162 (36)
Wind Load @ Rated Wind, Rear, N (lbf)	443 (100)
Operation temperature, °C (°F)	-40 to +60 (-40 to +140)
Radome Material/Color	ASA/Light Grey RAL7035
Mounting Hardware Material	Diecasted Aluminum and Galvanized Steel
Radiating Element Material	Aluminum
Reflector Material	Aluminum
Shipping Weight, kg (lb)	22.5 (49.6)
Packing Dimensions, HxWxD, mm (in)	1489 x 371 x 314 (58.6 x 14.6 x 12.4)

Ordering Information

Mounting Hardware	APM40-2
Mounting Pipe Diameter, mm (in)	60-120 (2.36-4.72)
Mounting Hardware Weight, kg (lb)	3.4 (7.5)



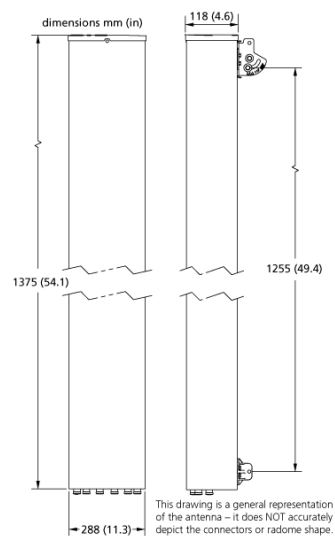
WindMaster™ Cross Polarized Quad-Pol Antenna, 1710-2700, 65deg, 17.5-18.5dBi, 1.3m, VET, 0-12deg



Antenna End Plate



Antenna Array



Antenna Drawing

Notes

•Available Configurations

APXVLL13N-C – No ACU included – Weight 16.9 kg, 37.3 lb

APXVLL13N-C-A20 – (2) Pre-commissioned ACUs included – Weight 17.9 kg, 39.5 lb

APXVLL13N-C-NA20 – (2) Pre-commissioned ACUs included with daisy-chain cable – Weight 18.0 kg, 39.7 lb

•For additional mounting information please click "External Document Links" below.

External Document Links

[APM40 Series Datasheet](#)

[APM40 Series Installation Instructions](#)