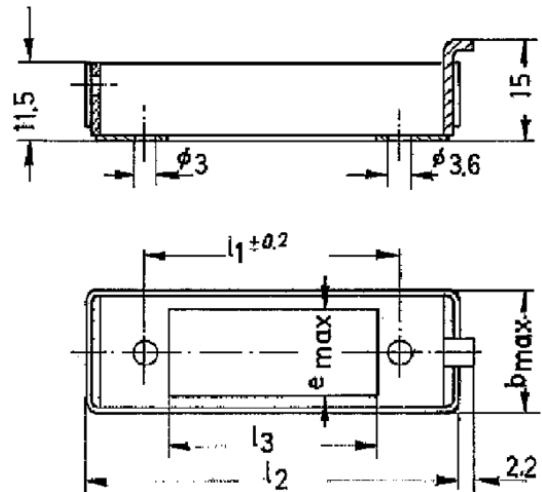


order number: B03015A0940

locking through 30/39



Technical Attributes	
Short name	locking through 30/39
Remarks	metal, black

Product description

Connectors according to DIN 41 618 and DIN 41 622 are knife-/spring contact types. Its rugged design causes a reliable electrical connection. They are mainly used in plug in unit designs and as cable connectors, using metal-/plastic housings with corresponding coding and locking parts.

The termination is soldering. Male connectors with terminals for PCB mounting and with wire wrap posts are possible (on request).