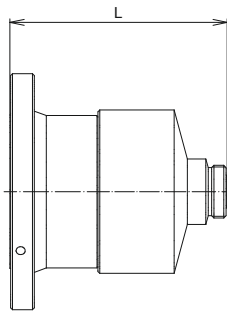


Adapters (50 Ohms)

For test purposes, SPINNER offers adapters from all EIA flanges to 7-16 female with excellent matching (VSWR ≤ 1.02). Adapters between different kinds of EIA flanges can be used indoors and outdoors to ensure full power.



Typical drawing

Adapters - Long

Part Number	Connector 1	Connector 2	Frequency Range	VSWR	Length L	Weight
BN 640682	N female	SMA male	0 - 860 MHz	≤ 1.02	21 mm	≈ 0.028 kg
BN 293750		N female			36 mm	≈ 0.040 kg
BN 293800	7-16 male	N male	0 - 860 MHz	≤ 1.02	31 mm	≈ 0.083 kg
BN 194400		N female			15 mm	≈ 0.073 kg
BN 293900	7-16 female	N male	0 - 860 MHz	≤ 1.02	35 mm	≈ 0.074 kg
BN 294000		N female			25 mm	≈ 0.078 kg
BN 196400		7-16 female			29 mm	≈ 0.088 kg
BN 902500	7/8" EIA	N female	0 - 860 MHz	≤ 1.02	59 mm	≈ 0.25 kg
BN 805600		7-16 female			58 mm	≈ 0.24 kg
BN 818000		7-16 male			47 mm	≈ 0.24 kg
BN 908300	13-30 male	7-16 female	0 - 860 MHz	≤ 1.02	62 mm	≈ 0.45 kg
BN 291400		13-30 male			53 mm	≈ 0.56 kg
BN 190800	13-30 female	13-30 female	0 - 860 MHz	≤ 1.02	43 mm	≈ 0.30 kg
BN 903600	1 5/8" EIA	N female	0 - 860 MHz	≤ 1.02	85 mm	≈ 0.81 kg
BN 909200		7-16 female			82 mm	≈ 0.86 kg
BN 912100		7/8" EIA			109 mm	≈ 1.13 kg
BN 914300		13-30 female			116 mm	≈ 1.21 kg
BN 914200		13-30 male			106 mm	≈ 1.19 kg
BN 945700	3 1/8" EIA	N female	0 - 860 MHz	≤ 1.02	113 mm	≈ 2.28 kg
BN 909308		7-16 female			120 mm	≈ 2.40 kg
BN 917500		1 5/8" EIA			152 mm	≈ 3.49 kg
BN 728900	4 1/2" EIA ¹	7-16 female	0 - 860 MHz	≤ 1.02	180 mm	≈ 4.66 kg
BN 715000		3 1/8" EIA			177 mm	≈ 5.69 kg
BN 715001		4 1/16" MYAT				
BN 528118	52-120 BT	4 1/2" EIA	0 - 860 MHz	≤ 1.02	185 mm	≈ 4.06 kg
BN 918900	6 1/8" EIA	3 1/8" EIA	0 - 860 MHz	≤ 1.02	194 mm	≈ 8.15 kg
BN 528117		52-120 BT			200 mm	≈ 5.30 kg

¹ 339 IEC 50-105